



Montgomery Study Area - 2035 Long Range Transportation Plan

2000 vs. 2005 Traffic Analysis Zone Comparison

Legend

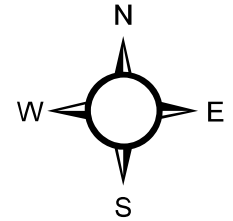
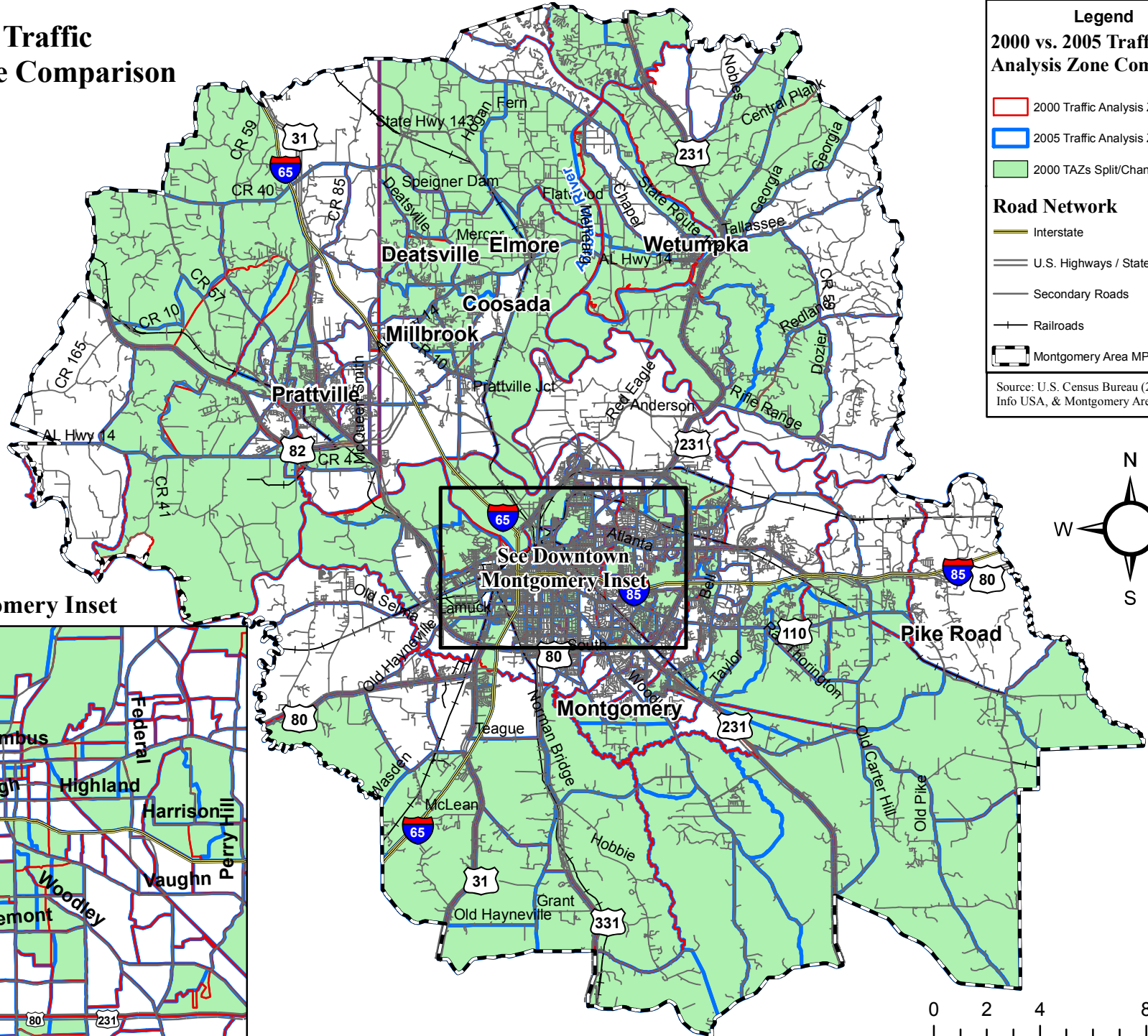
2000 vs. 2005 Traffic Analysis Zone Comparison

- 2000 Traffic Analysis Zones
- 2005 Traffic Analysis Zones
- 2000 TAZs Split/Changed in 2005

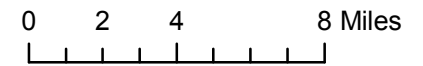
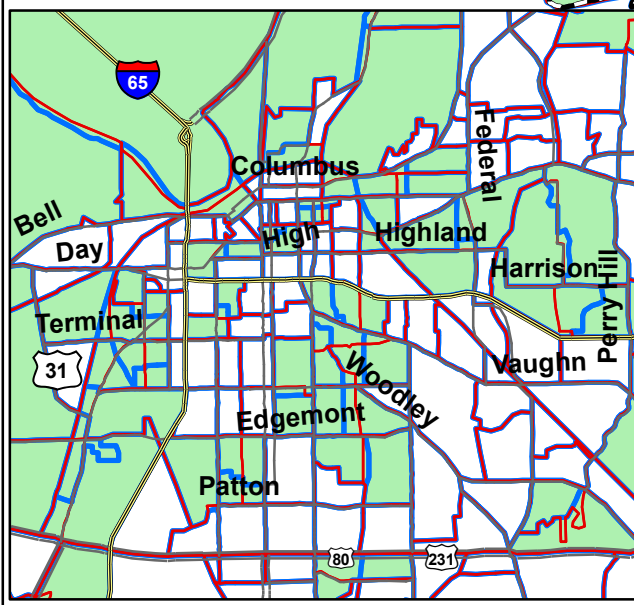
Road Network

- Interstate
- U.S. Highways / State Highways
- Secondary Roads
- Railroads
- Montgomery Area MPO Boundary

Source: U.S. Census Bureau (2000), Info USA, & Montgomery Area MPO.



Downtown Montgomery Inset

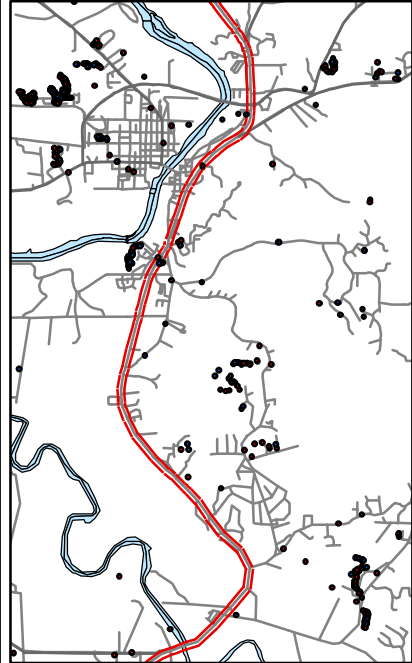




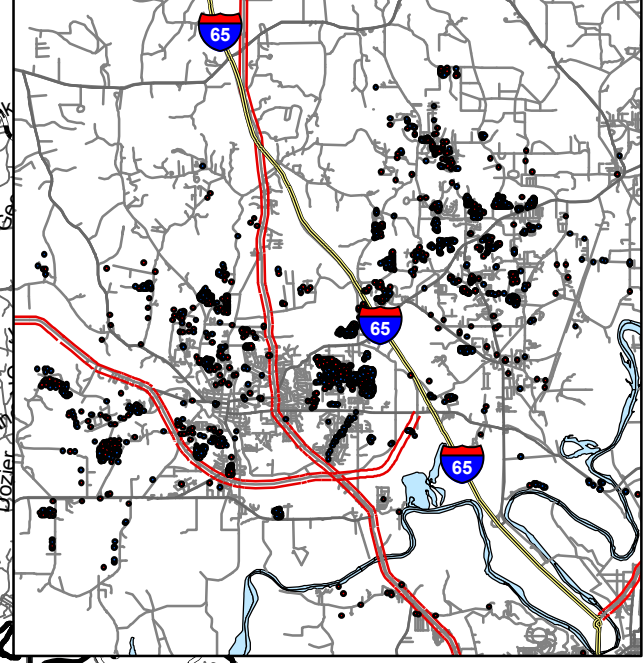
Montgomery Study Area - 2035 Long Range Transportation Plan

2001 - 2008 Building Permits

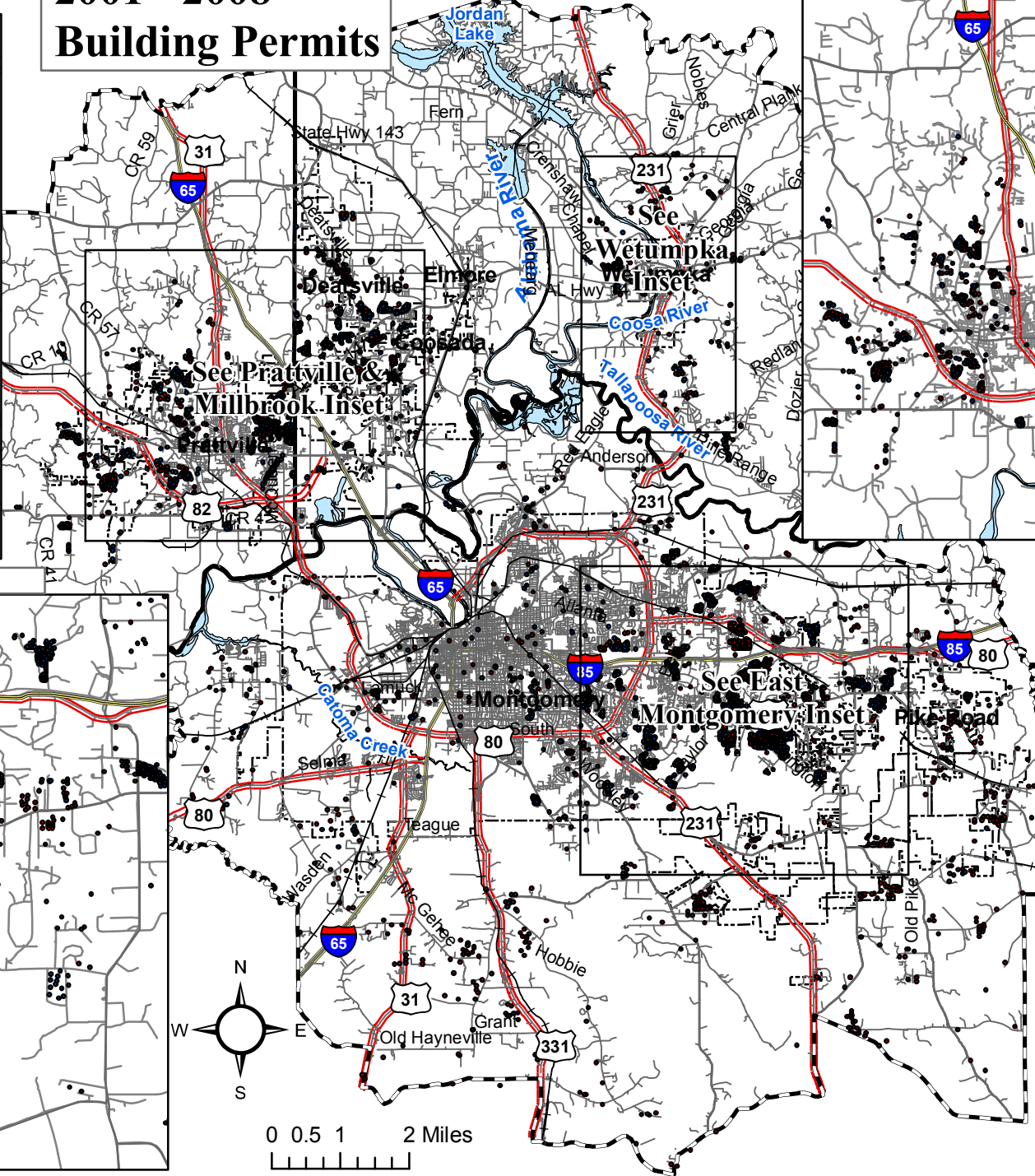
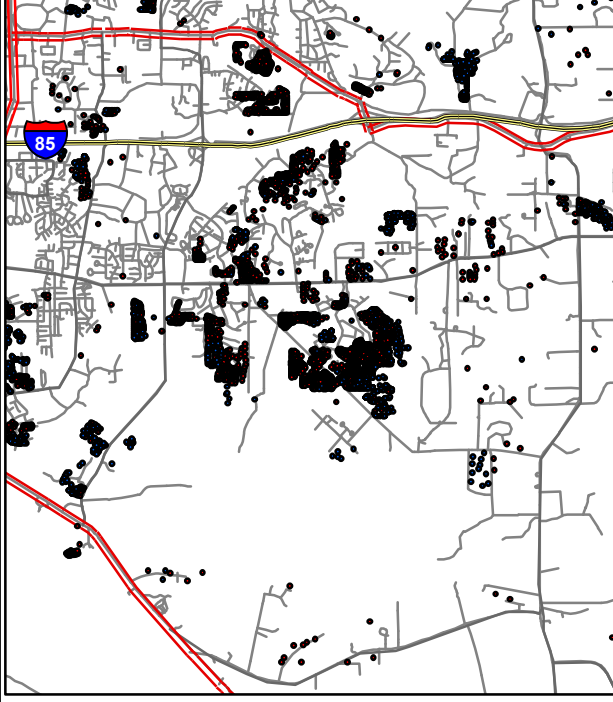
Wetumpka Inset



Prattville & Millbrook Inset



East Montgomery Inset



Legend

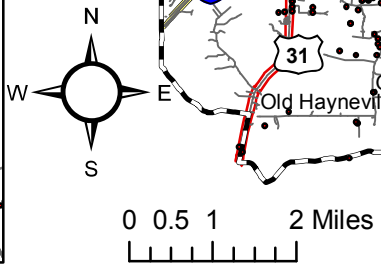
2001 - 2008 Residential Building Permits

- 2001 - 2005 Building Permits
- 2006 - 2008 Building Permits

Road Network

- Interstate Highways
- U.S. Highways / State Highways
- Secondary Roads
- Railroads
- Water
- City Limits
- Montgomery Area MPO Boundary

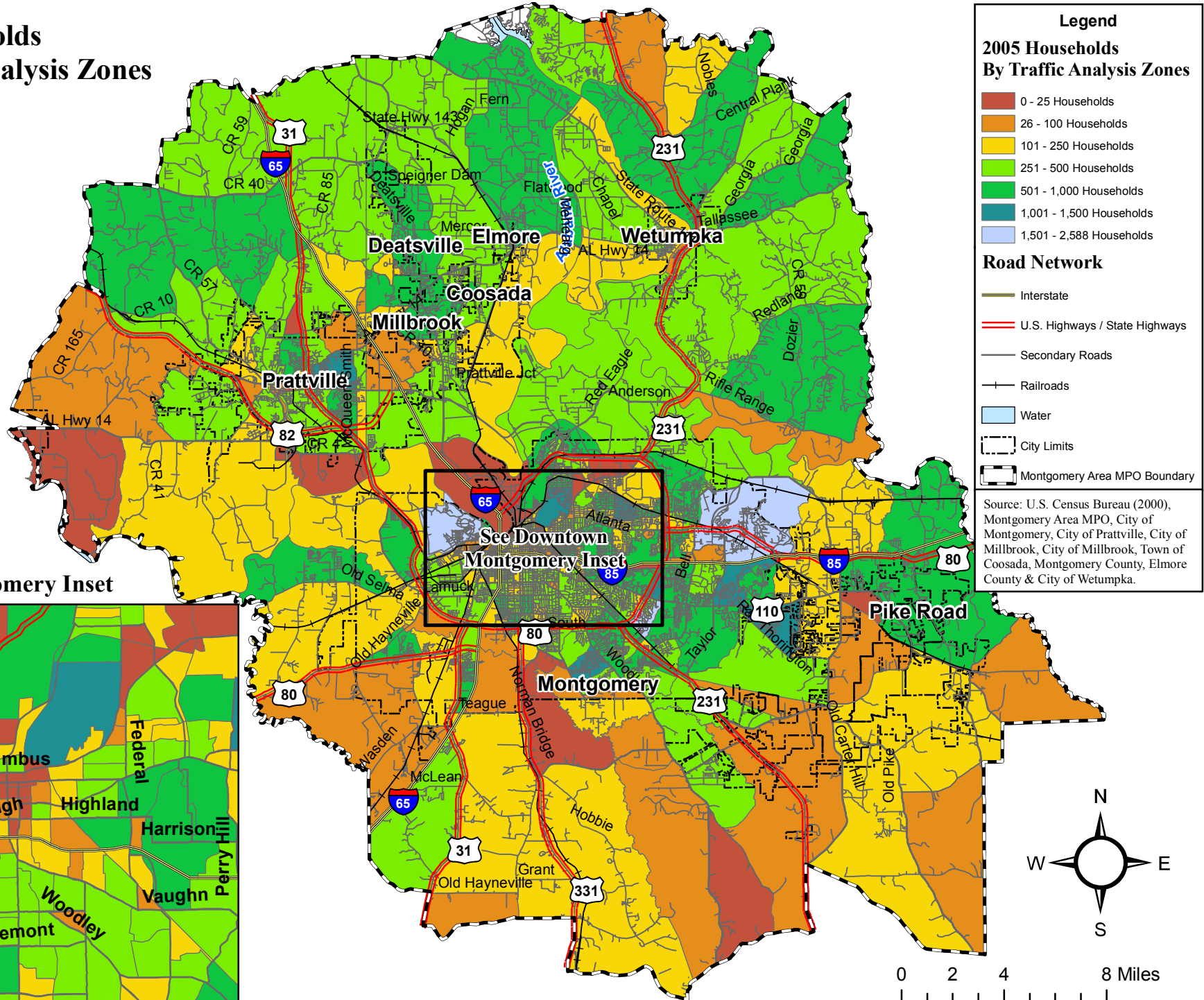
Source: U.S. Census Bureau (2000), Montgomery Area MPO, City of Montgomery, City of Prattville, City of Millbrook, City of Millbrook, Town of Coosada, Montgomery County & City of Wetumpka.





Montgomery Study Area - 2035 Long Range Transportation Plan

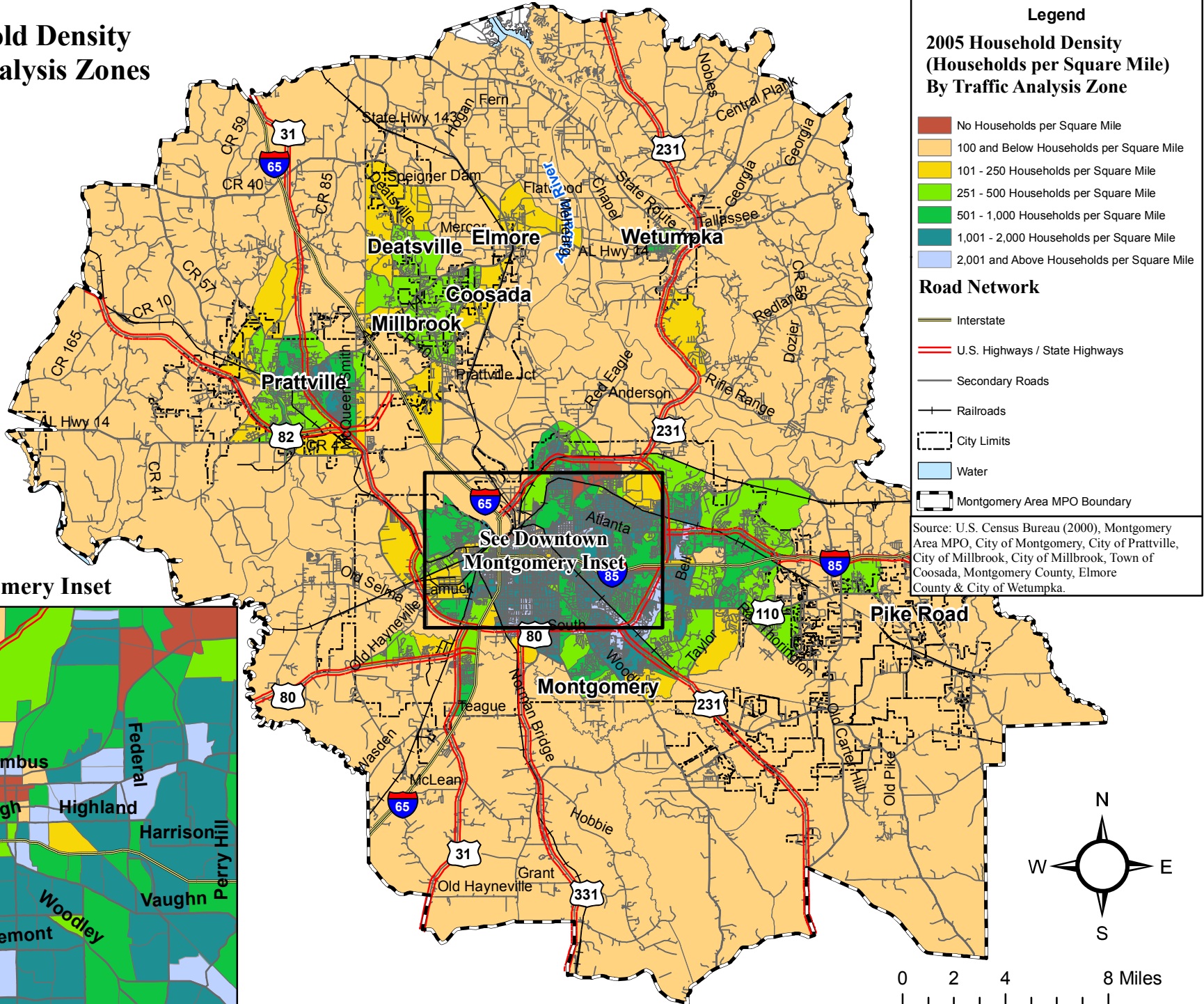
2005 Households By Traffic Analysis Zones



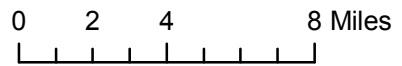
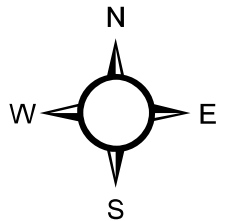
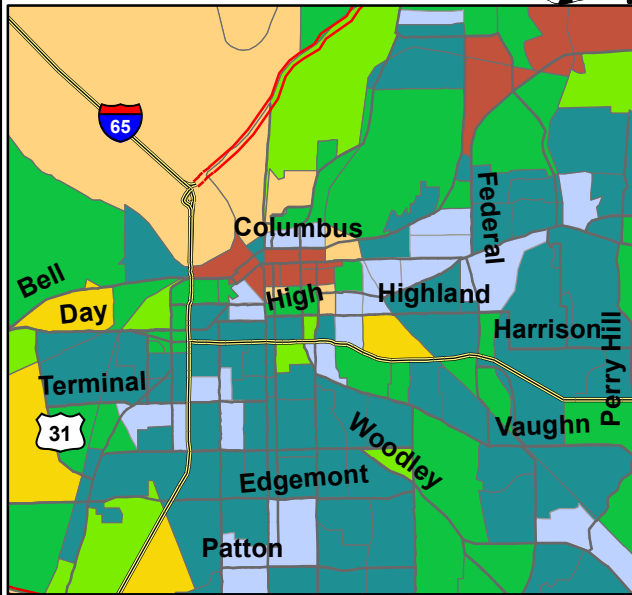


Montgomery Study Area - 2035 Long Range Transportation Plan

2005 Household Density By Traffic Analysis Zones



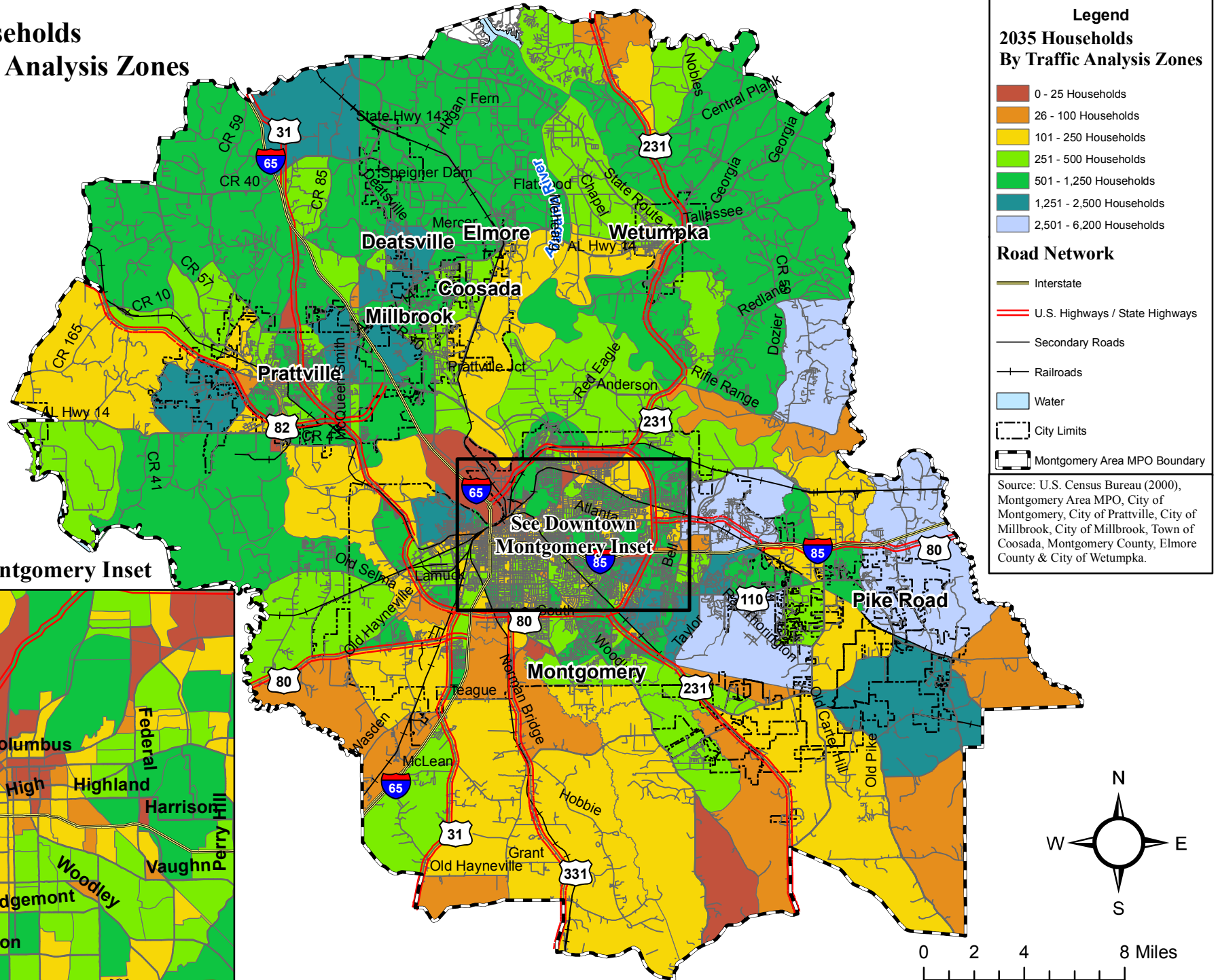
Downtown Montgomery Inset





Montgomery Study Area - 2035 Long Range Transportation Plan

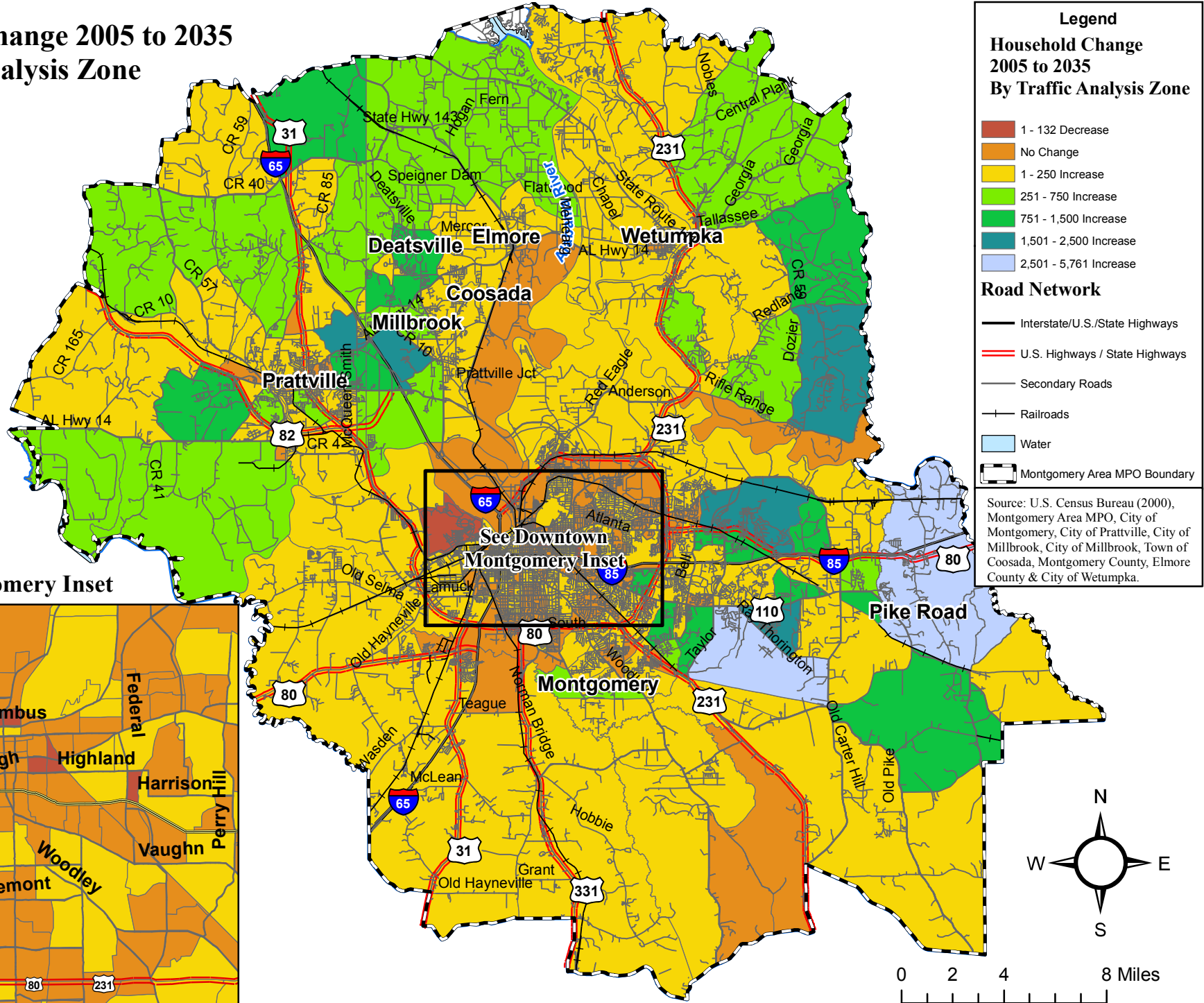
2035 Households By Traffic Analysis Zones



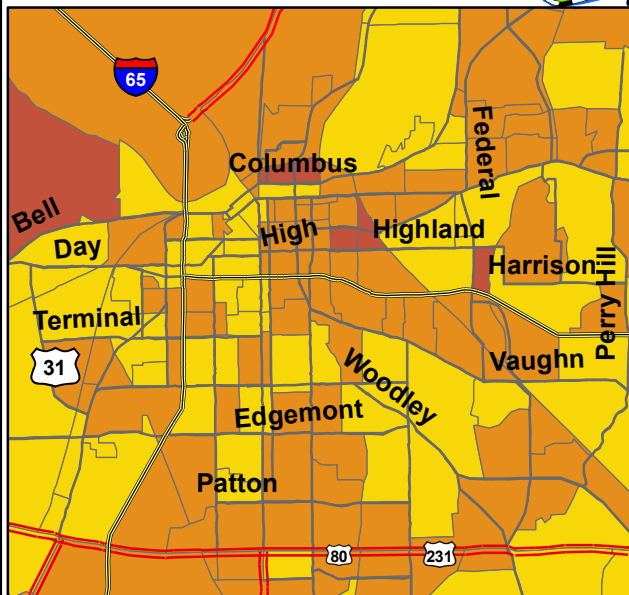


Montgomery Study Area - 2035 Long Range Transportation Plan

Household Change 2005 to 2035 By Traffic Analysis Zone



Downtown Montgomery Inset

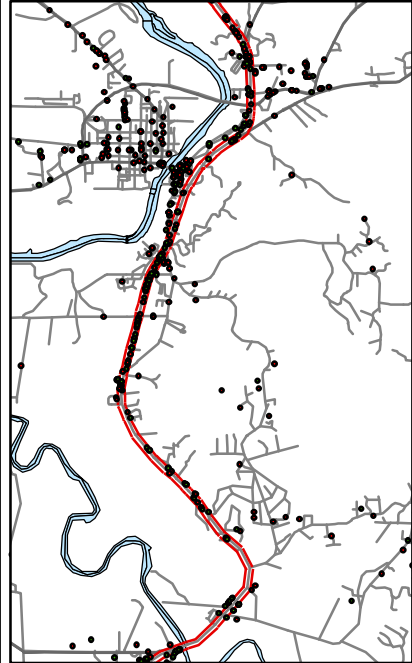




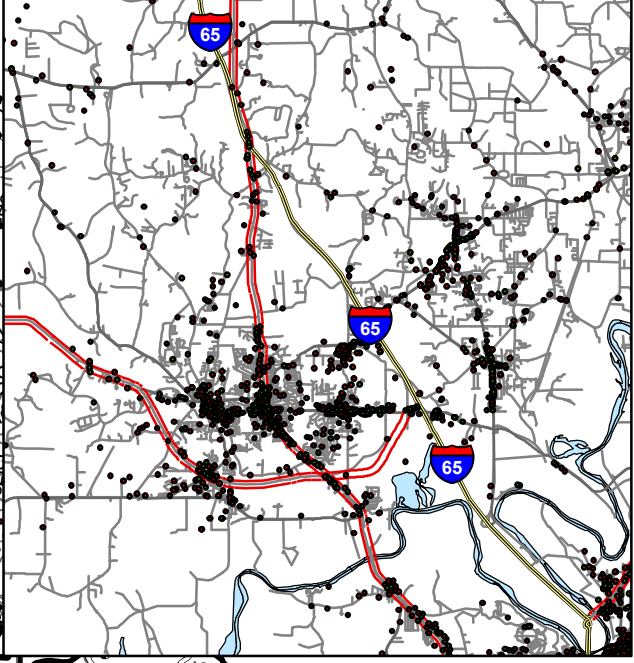
Montgomery Study Area - 2035 Long Range Transportation Plan

2005 Retail & Non-Retail Employers

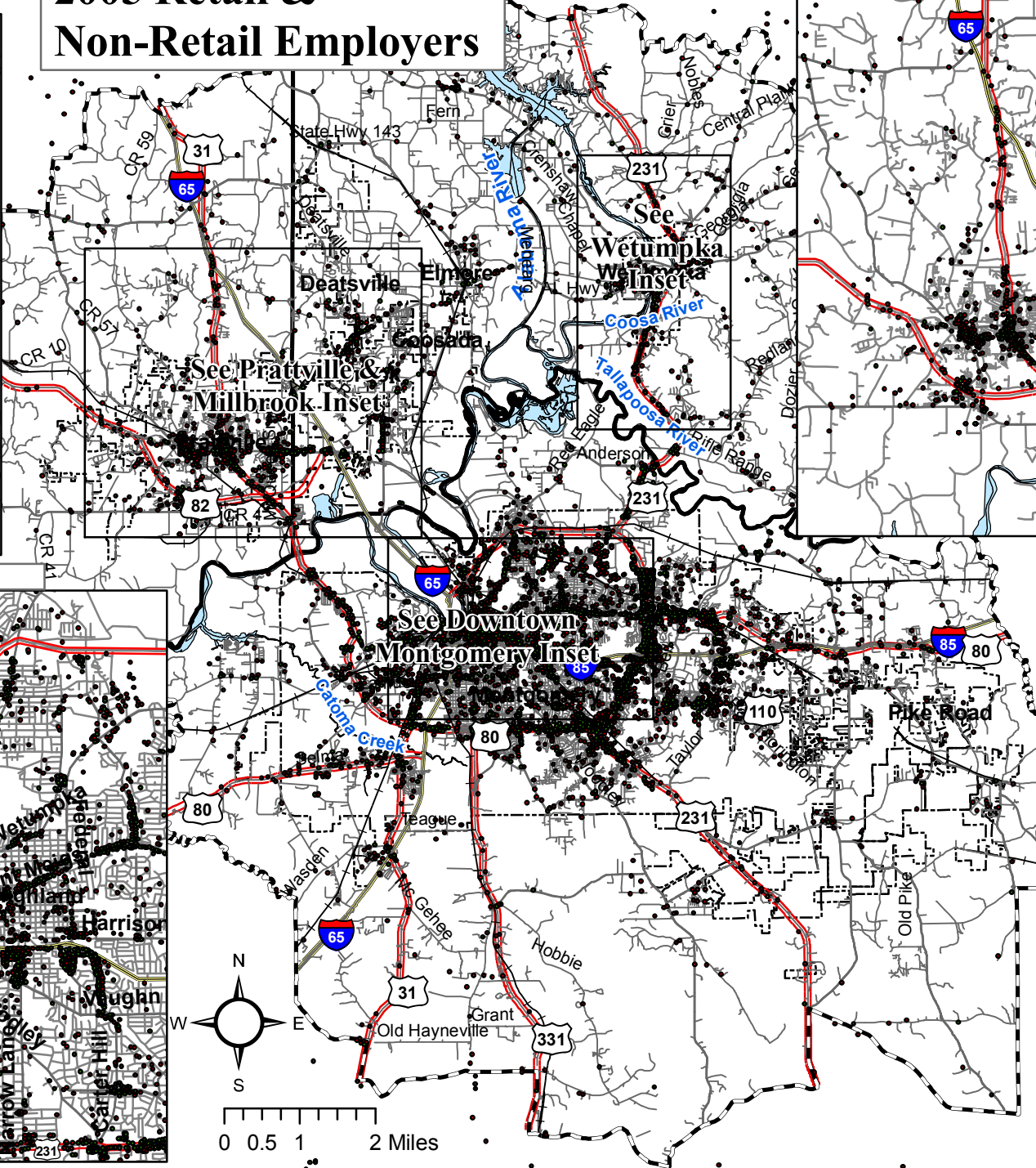
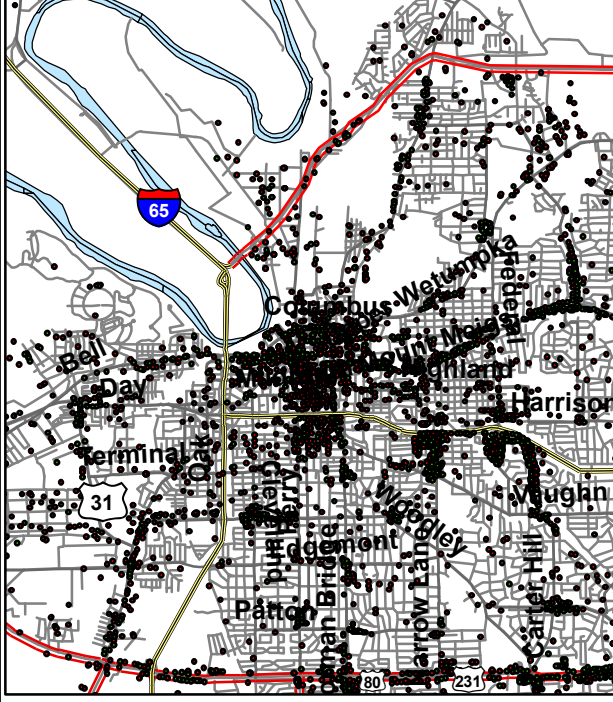
Wetumpka Inset



Prattville & Millbrook Inset



Downtown Montgomery Inset

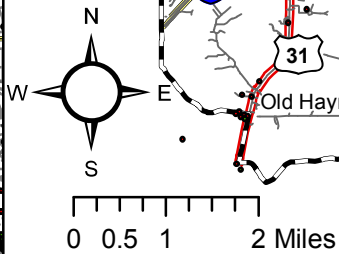


Legend

- Non-Retail Employer
- Retail Employer

Road Network

- Interstate Highways
- U.S. Highways / State Highways
- Secondary Roads
- Railroads
- Water
- City Limits
- Montgomery Area MPO Boundary

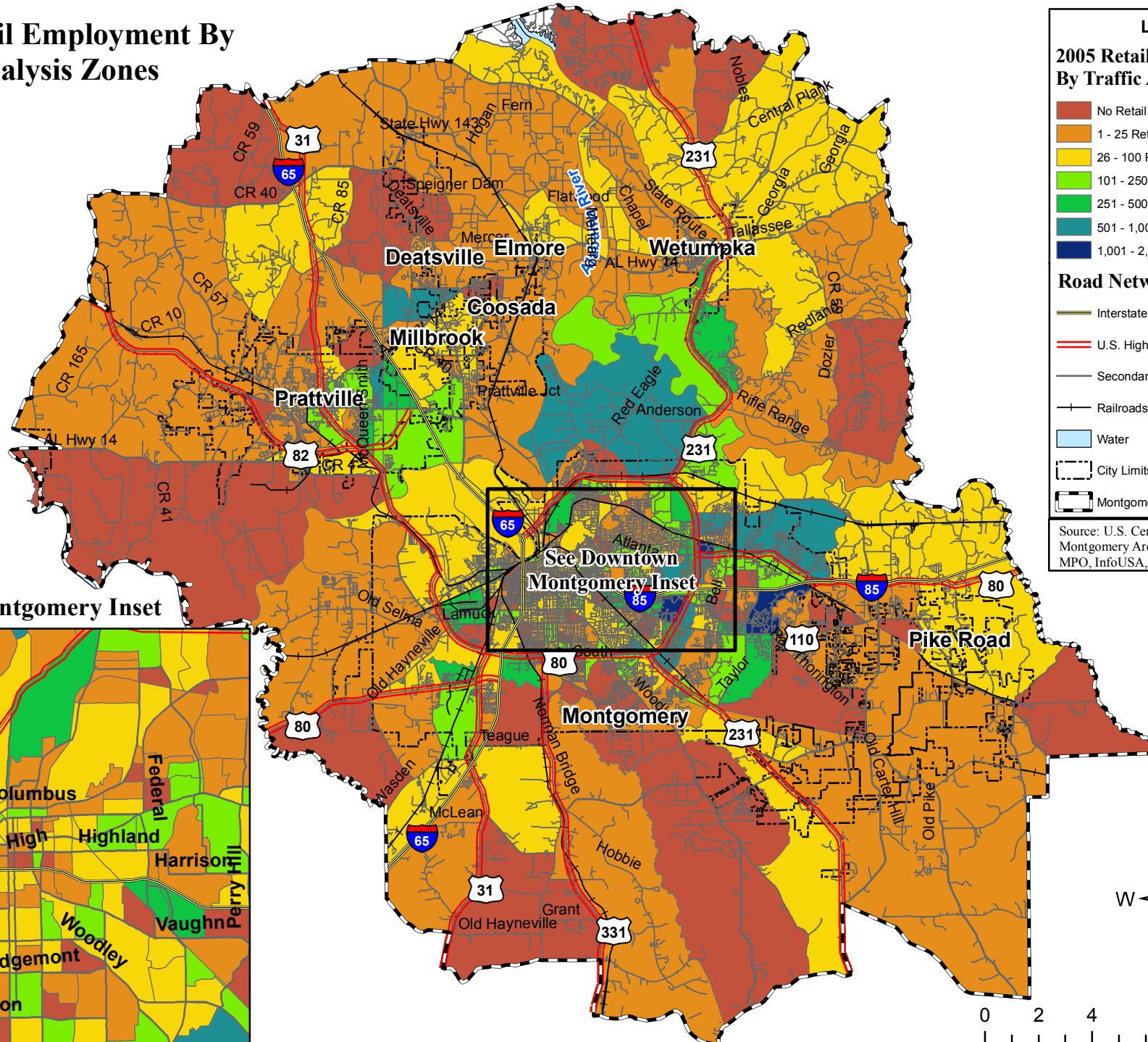


Source: U.S. Census Bureau (2000), InfoUSA, & Montgomery Area MPO.



Montgomery Study Area - 2035 Long Range Transportation Plan

2005 Retail Employment By Traffic Analysis Zones



Legend

2005 Retail Employment by Traffic Analysis Zones

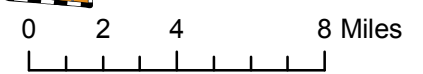
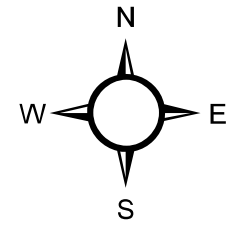
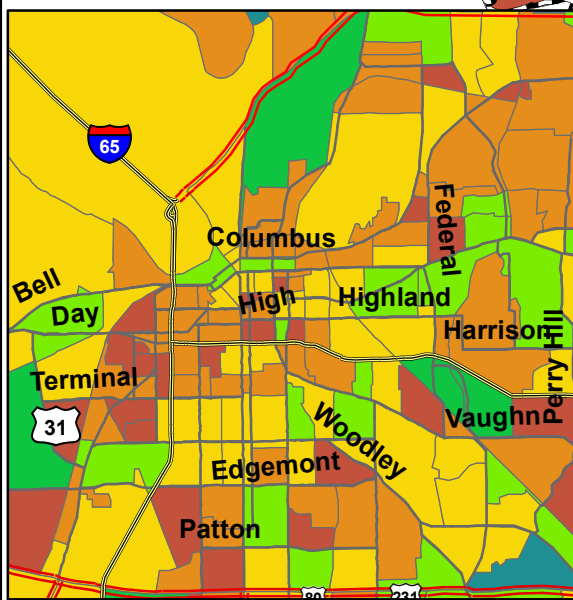
- No Retail Employees
- 1 - 25 Retail Employees
- 26 - 100 Retail Employees
- 101 - 250 Retail Employees
- 251 - 500 Retail Employees
- 501 - 1,000 Retail Employees
- 1,001 - 2,351 Retail Employees

Road Network

- Interstate
- U.S. Highways / State Highways
- Secondary Roads
- Railroads
- Water
- City Limits
- Montgomery Area MPO Boundary

Source: U.S. Census Bureau (2000), Montgomery Area MPO, InfoUSA, and ESRI.

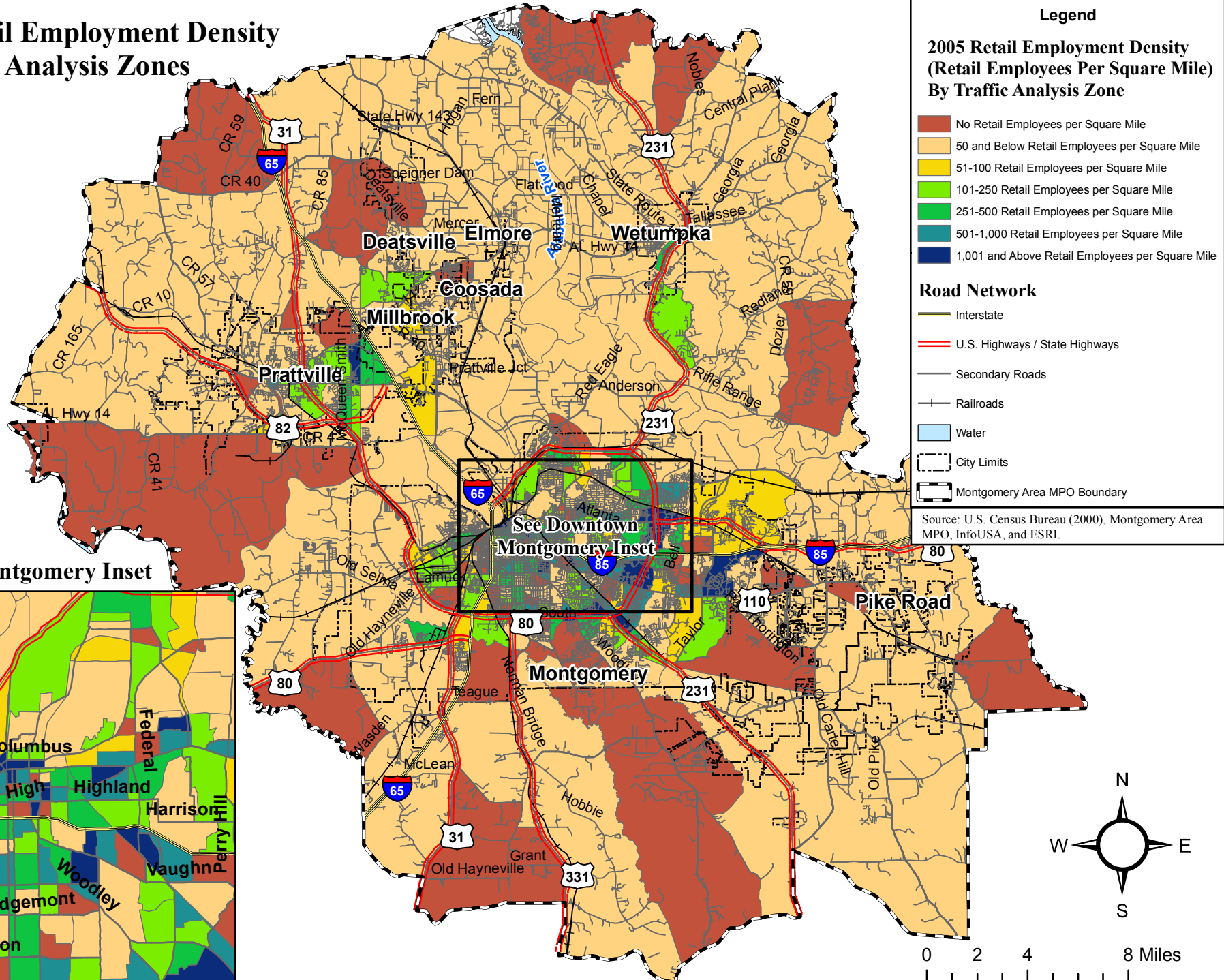
Downtown Montgomery Inset





Montgomery Study Area - 2035 Long Range Transportation Plan

2005 Retail Employment Density By Traffic Analysis Zones



Legend

2005 Retail Employment Density (Retail Employees Per Square Mile) By Traffic Analysis Zone

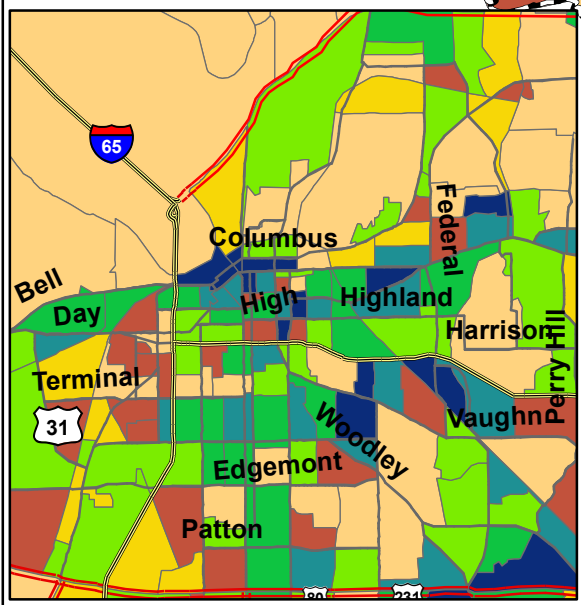
- No Retail Employees per Square Mile
- 50 and Below Retail Employees per Square Mile
- 51-100 Retail Employees per Square Mile
- 101-250 Retail Employees per Square Mile
- 251-500 Retail Employees per Square Mile
- 501-1,000 Retail Employees per Square Mile
- 1,001 and Above Retail Employees per Square Mile

Road Network

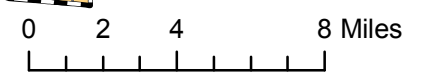
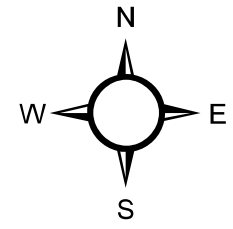
- Interstate
- U.S. Highways / State Highways
- Secondary Roads
- Railroads
- Water
- City Limits
- Montgomery Area MPO Boundary

Source: U.S. Census Bureau (2000), Montgomery Area MPO, InfoUSA, and ESRI.

Downtown Montgomery Inset



See Downtown Montgomery Inset





Montgomery Study Area - 2035 Long Range Transportation Plan

2035 Retail Employment By Traffic Analysis Zones

Legend

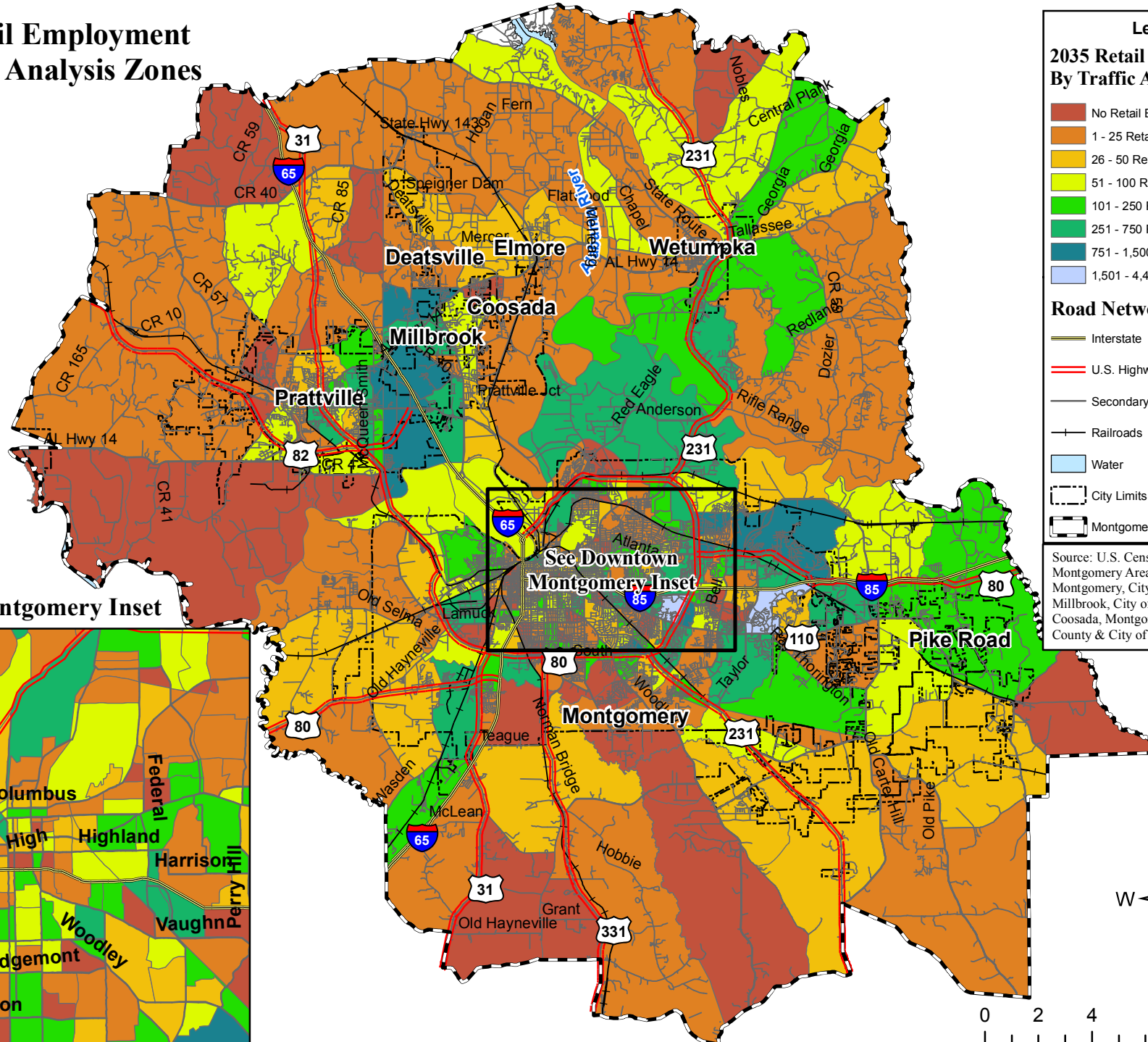
2035 Retail Employment By Traffic Analysis Zones

- No Retail Employees
- 1 - 25 Retail Employees
- 26 - 50 Retail Employees
- 51 - 100 Retail Employees
- 101 - 250 Retail Employees
- 251 - 750 Retail Employees
- 751 - 1,500 Retail Employees
- 1,501 - 4,435 Retail Employees

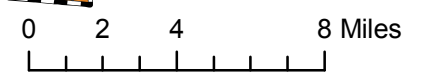
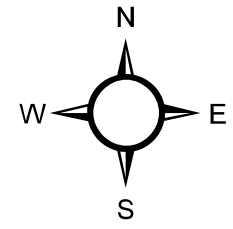
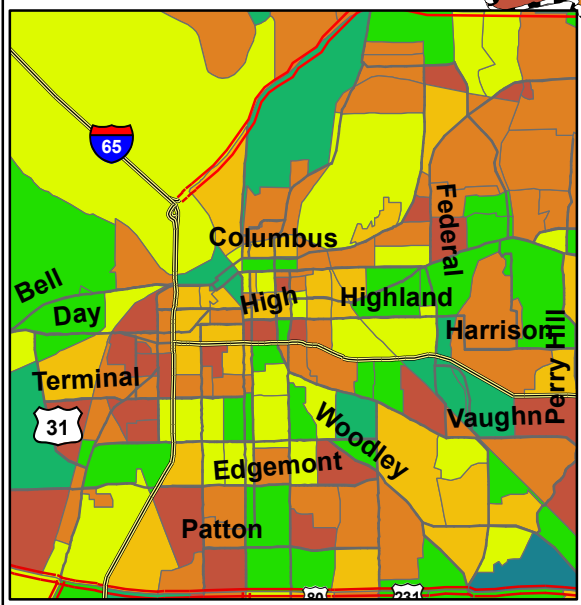
Road Network

- Interstate
- U.S. Highways / State Highways
- Secondary Roads
- Railroads
- Water
- City Limits
- Montgomery Area MPO Boundary

Source: U.S. Census Bureau (2000), Montgomery Area MPO, City of Montgomery, City of Prattville, City of Millbrook, City of Millbrook, Town of Coosada, Montgomery County, Elmore County & City of Wetumpka.



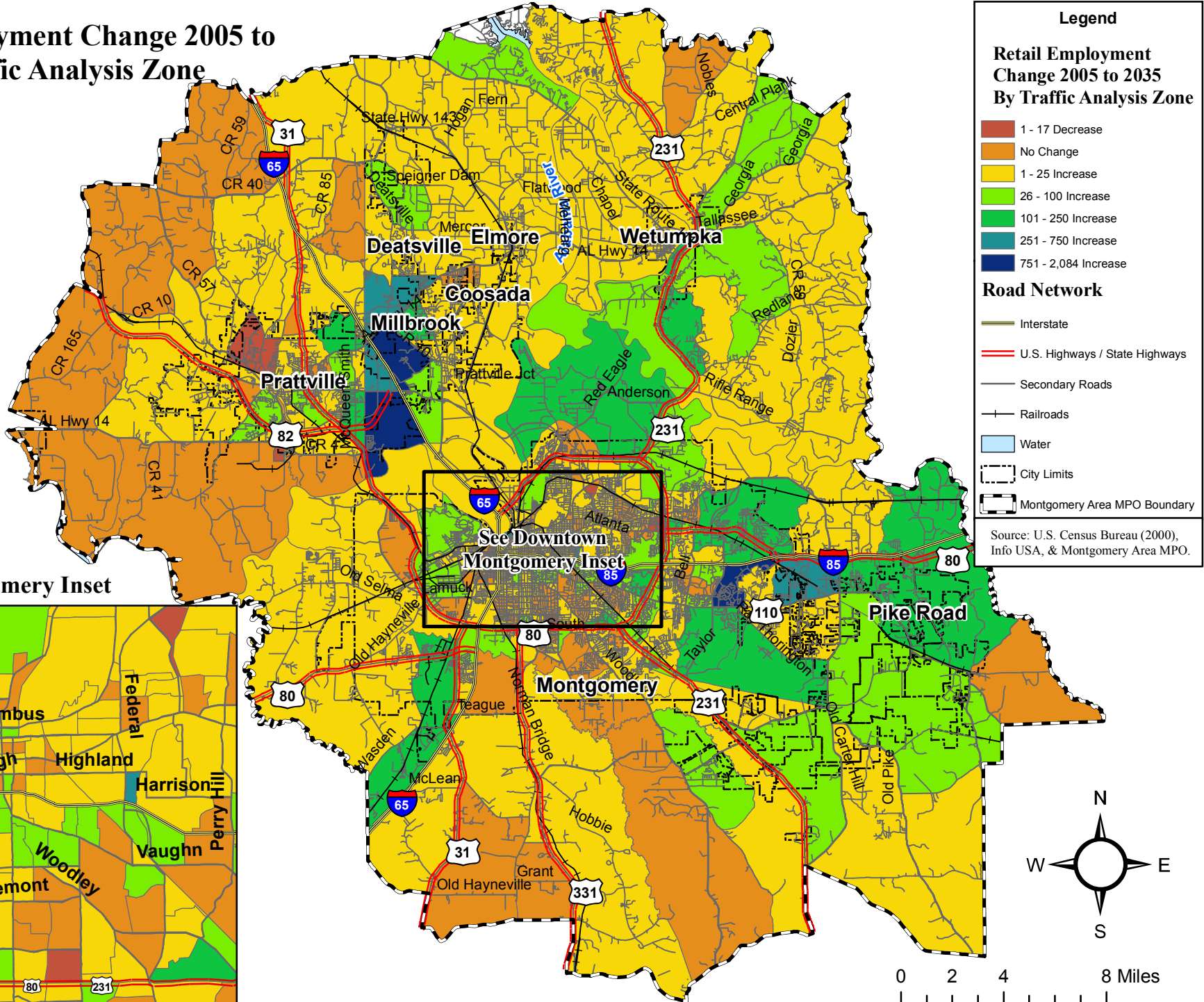
Downtown Montgomery Inset



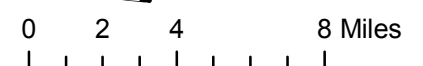
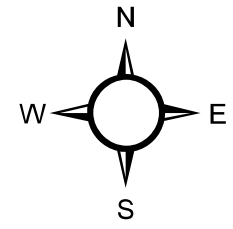
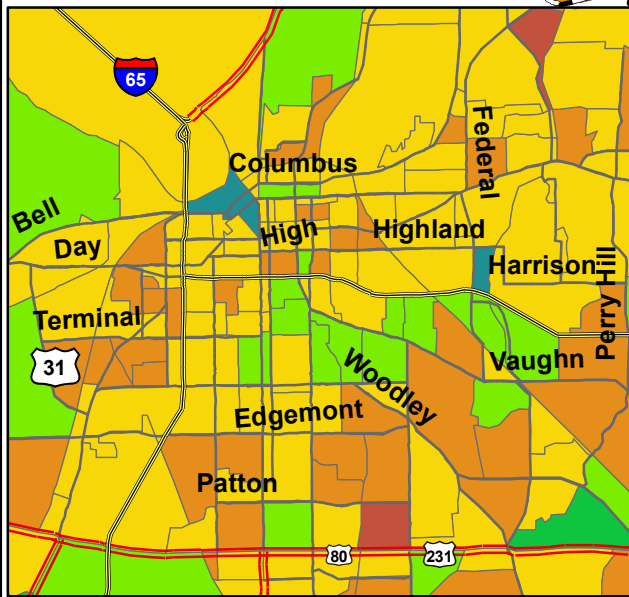


Montgomery Study Area - 2035 Long Range Transportation Plan

Retail Employment Change 2005 to 2035 By Traffic Analysis Zone



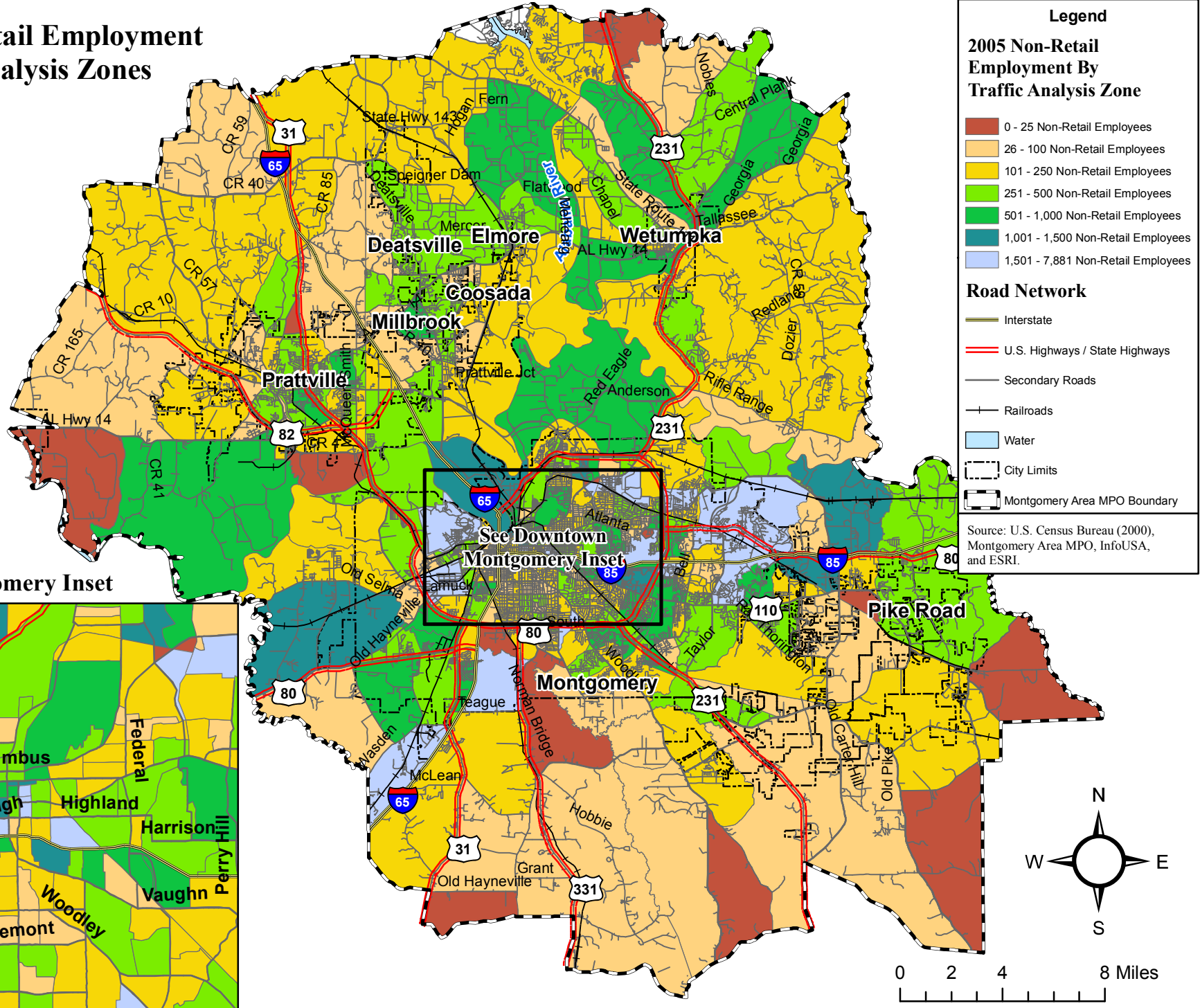
Downtown Montgomery Inset





Montgomery Study Area - 2035 Long Range Transportation Plan

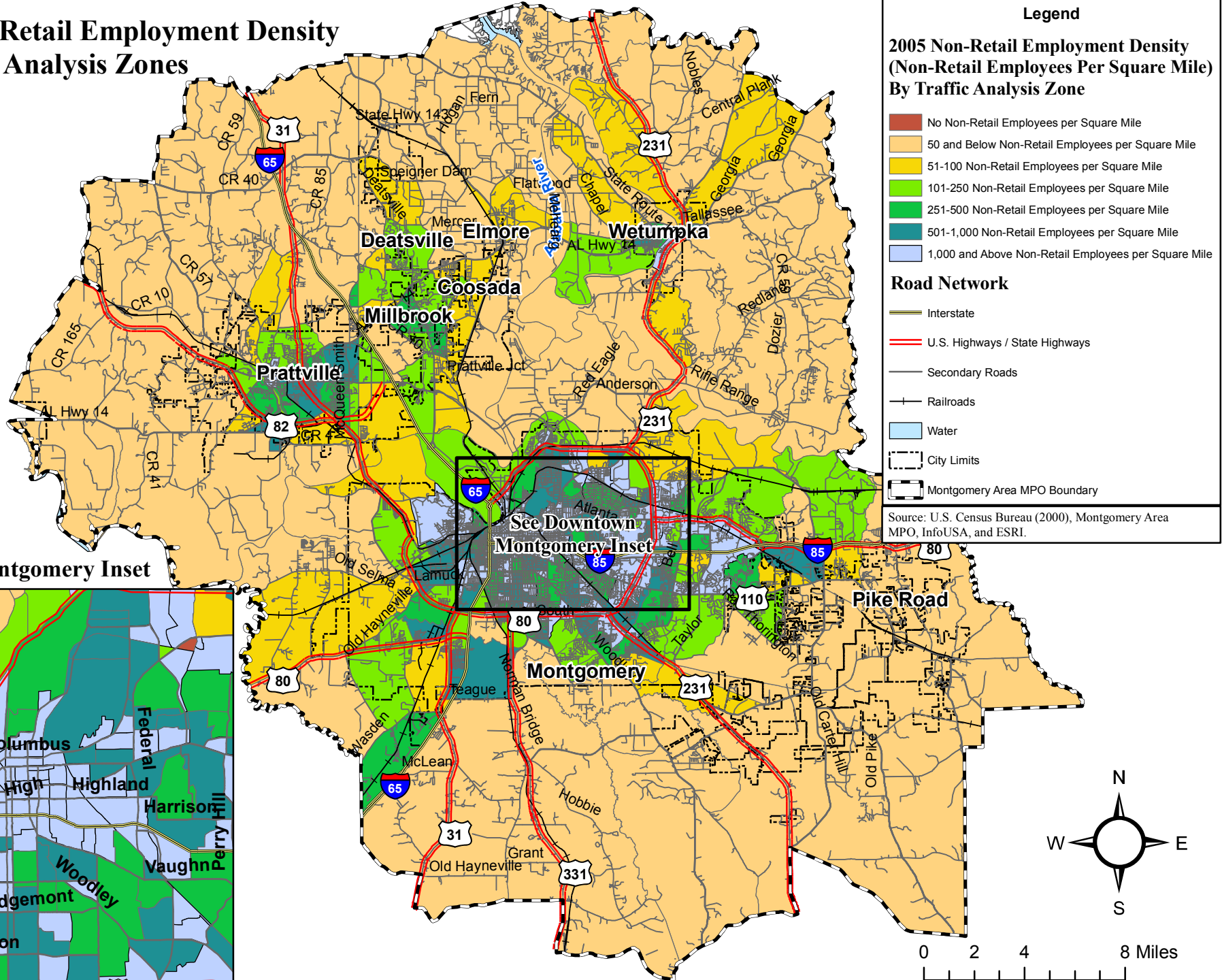
2005 Non-Retail Employment By Traffic Analysis Zones





Montgomery Study Area - 2035 Long Range Transportation Plan

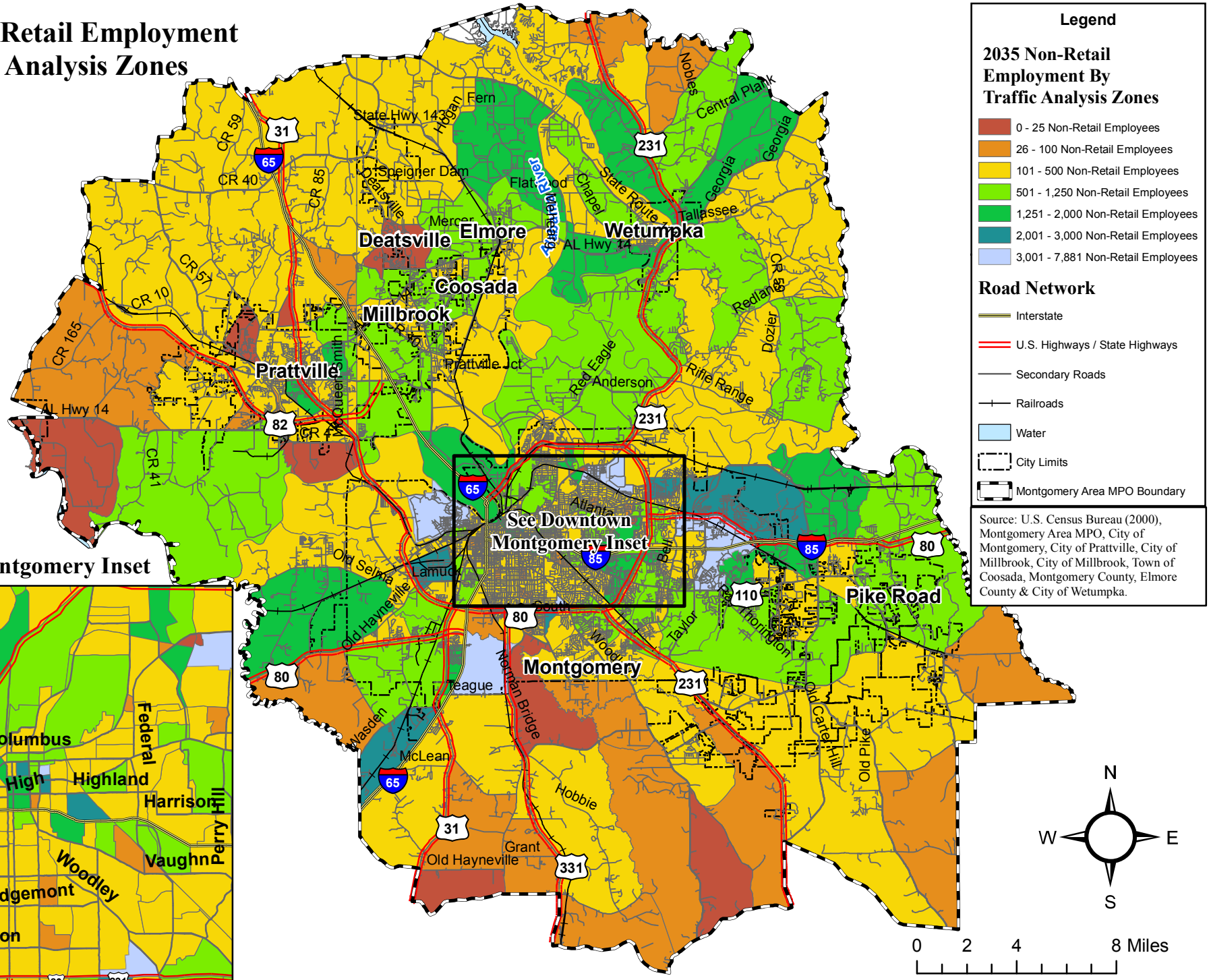
2005 Non-Retail Employment Density By Traffic Analysis Zones





Montgomery Study Area - 2035 Long Range Transportation Plan

2035 Non-Retail Employment By Traffic Analysis Zones





Montgomery Study Area - 2035 Long Range Transportation Plan

2005 School/Daycare Enrollment By Traffic Analysis Zones

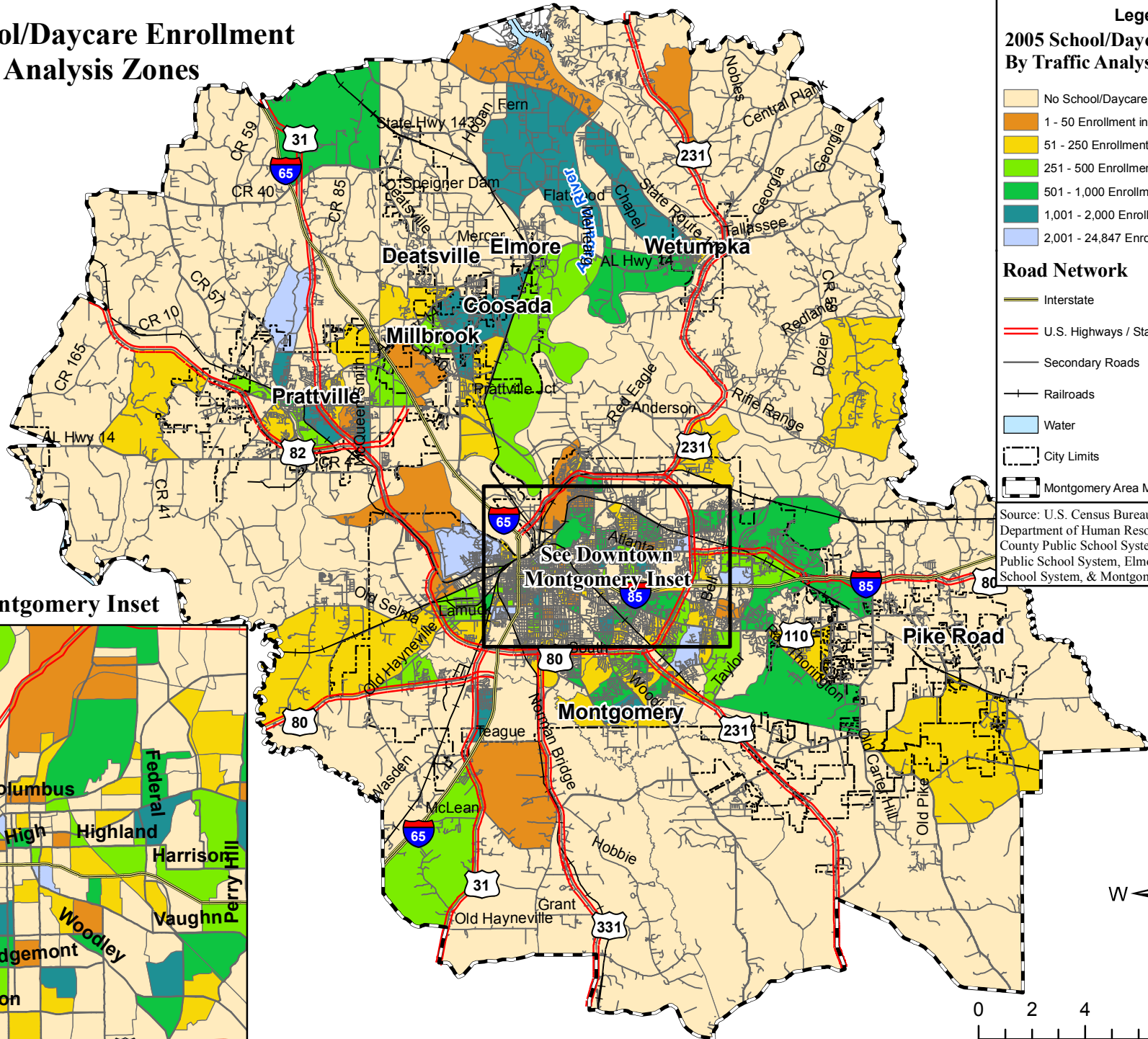
Legend 2005 School/Daycare Enrollment By Traffic Analysis Zones

- No School/Daycare Enrollment
- 1 - 50 Enrollment in School/Daycare
- 51 - 250 Enrollment in School/Daycare
- 251 - 500 Enrollment in School/Daycare
- 501 - 1,000 Enrollment in School/Daycare
- 1,001 - 2,000 Enrollment in School/Daycare
- 2,001 - 24,847 Enrollment in School/Daycare

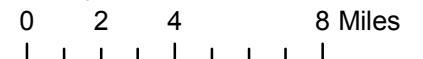
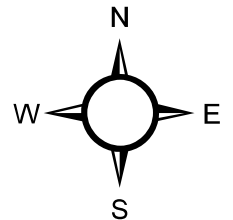
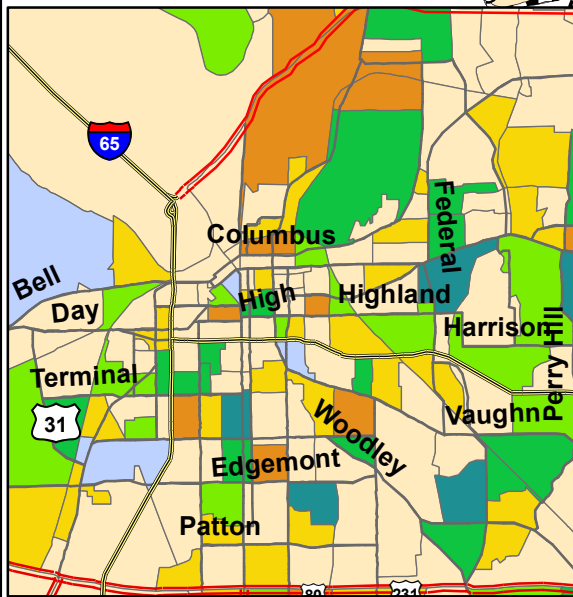
Road Network

- Interstate
- U.S. Highways / State Highways
- Secondary Roads
- Railroads
- Water
- City Limits
- Montgomery Area MPO Boundary

Source: U.S. Census Bureau (2000), Alabama Department of Human Resources, Montgomery County Public School System, Autauga County Public School System, Elmore County Public School System, & Montgomery Area MPO.



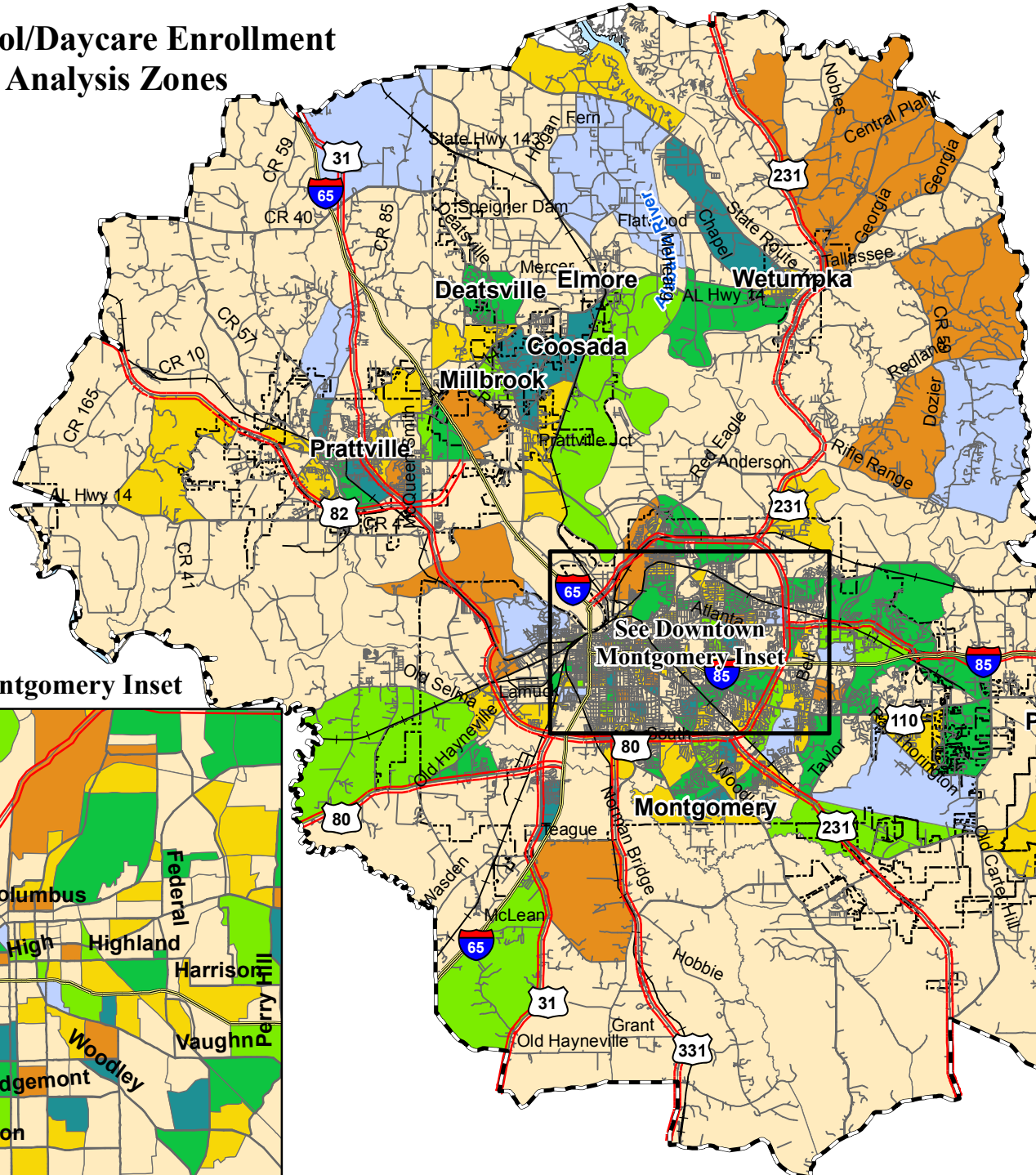
Downtown Montgomery Inset





Montgomery Study Area - 2035 Long Range Transportation Plan

2035 School/Daycare Enrollment By Traffic Analysis Zones



Legend

2035 School/Daycare Enrollment By Traffic Analysis Zones

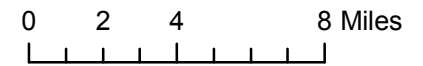
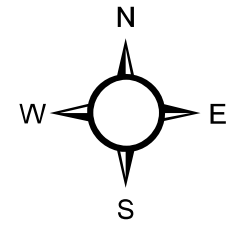
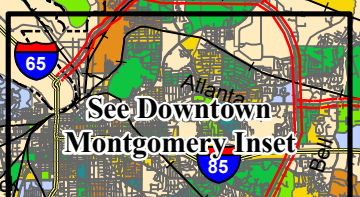
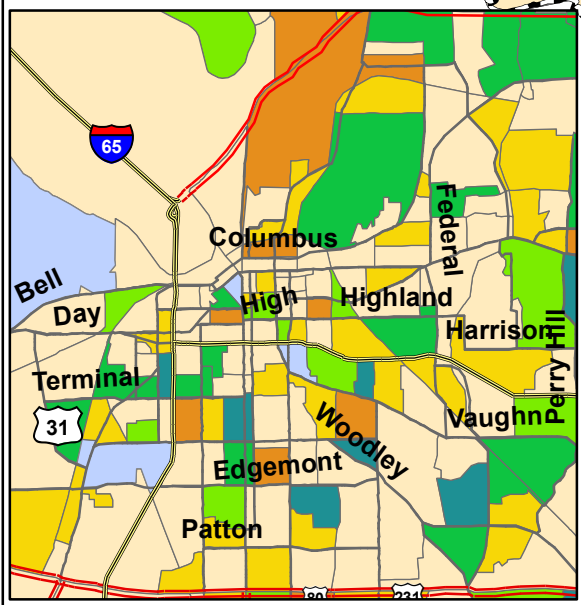
- No School/Daycare Enrollment
- 1 - 50 Enrollment in School/Daycare
- 51 - 250 Enrollment in School/Daycare
- 251 - 500 Enrollment in School/Daycare
- 501 - 1,000 Enrollment in School/Daycare
- 1,001 - 2,000 Enrollment in School/Daycare
- 2,001 - 24,847 Enrollment in School/Daycare

Road Network

- Interstate
- U.S. Highways / State Highways
- Secondary Roads
- Railroads
- Water
- City Limits
- Montgomery Area MPO Boundary

Source: U.S. Census Bureau (2000), Alabama Department of Human Resources, Montgomery County Public School System, Autauga County Public School System, Elmore County Public School System, & Montgomery Area MPO.

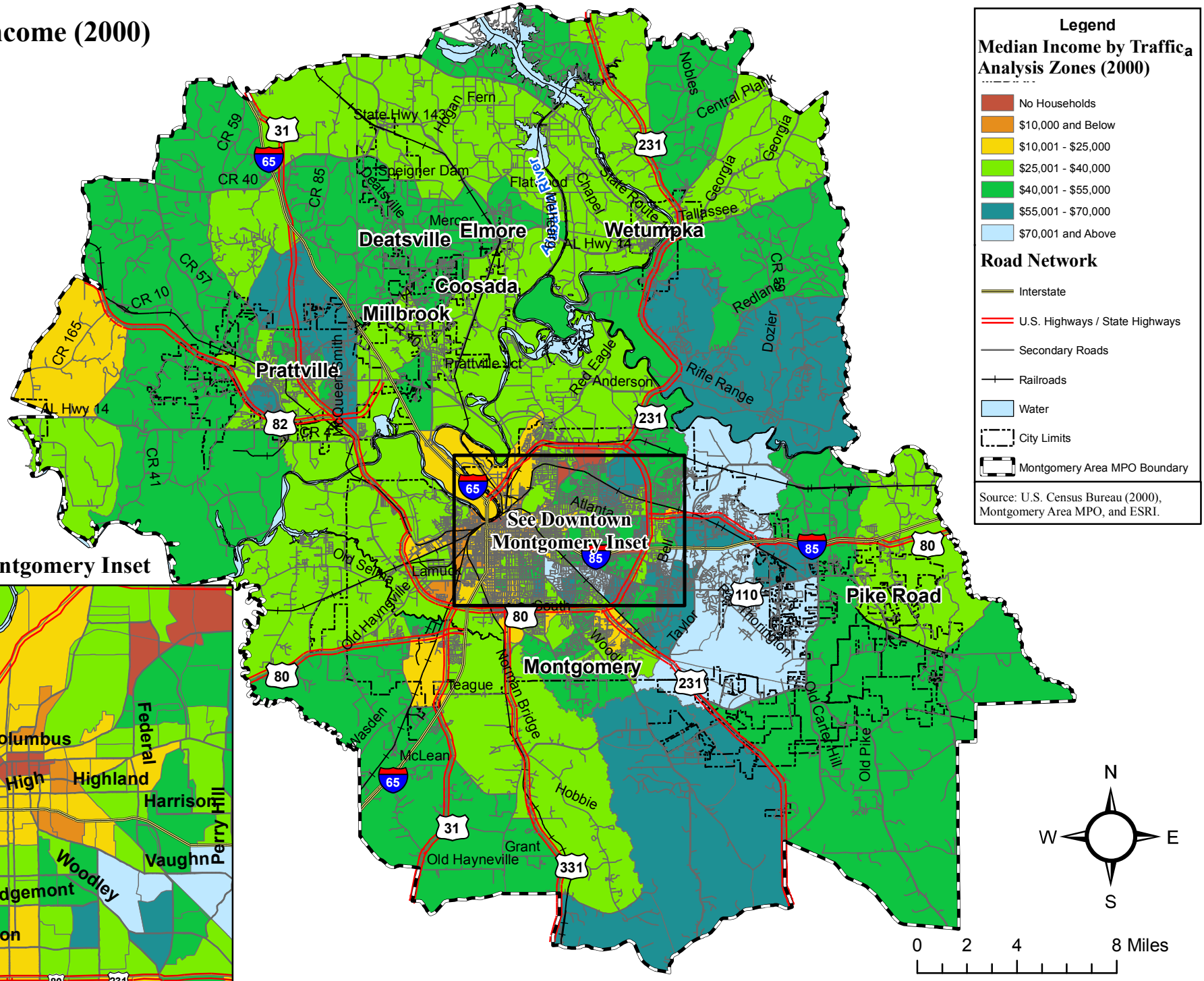
Downtown Montgomery Inset





Montgomery Study Area - 2035 Long Range Transportation Plan

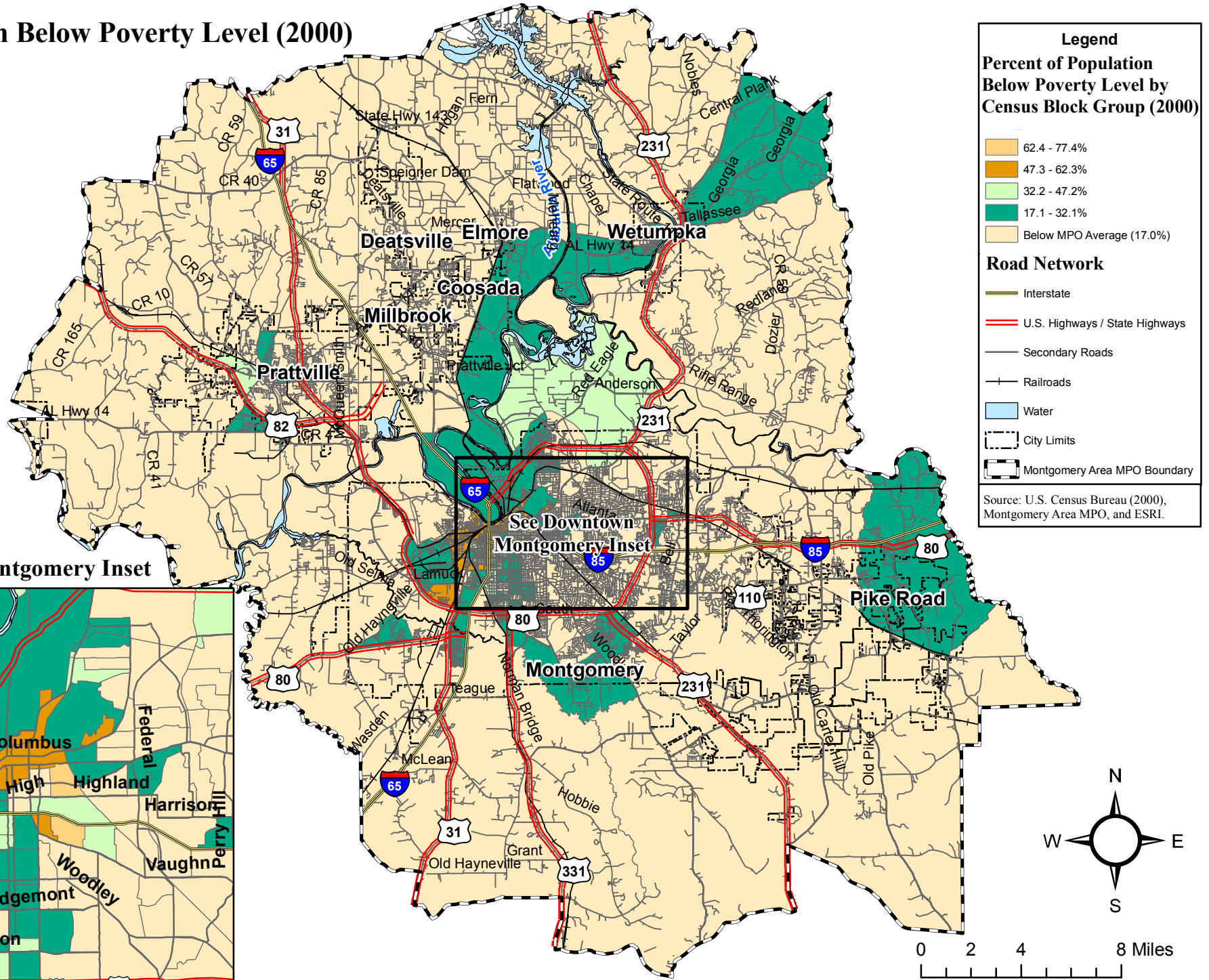
Median Income (2000)



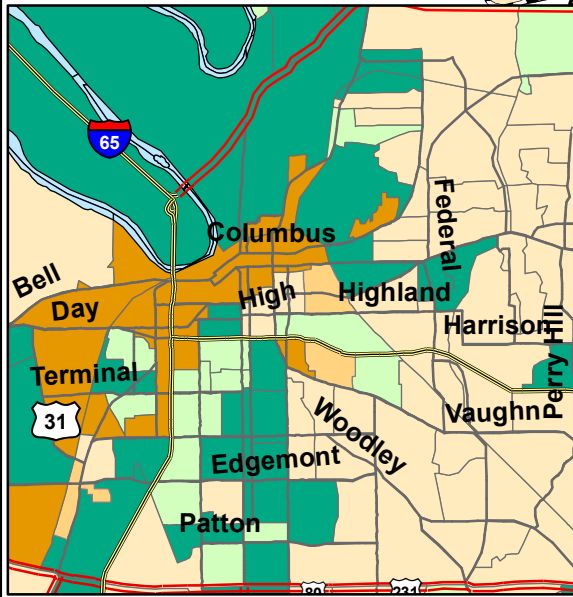


Montgomery Study Area - 2035 Long Range Transportation Plan

Population Below Poverty Level (2000)



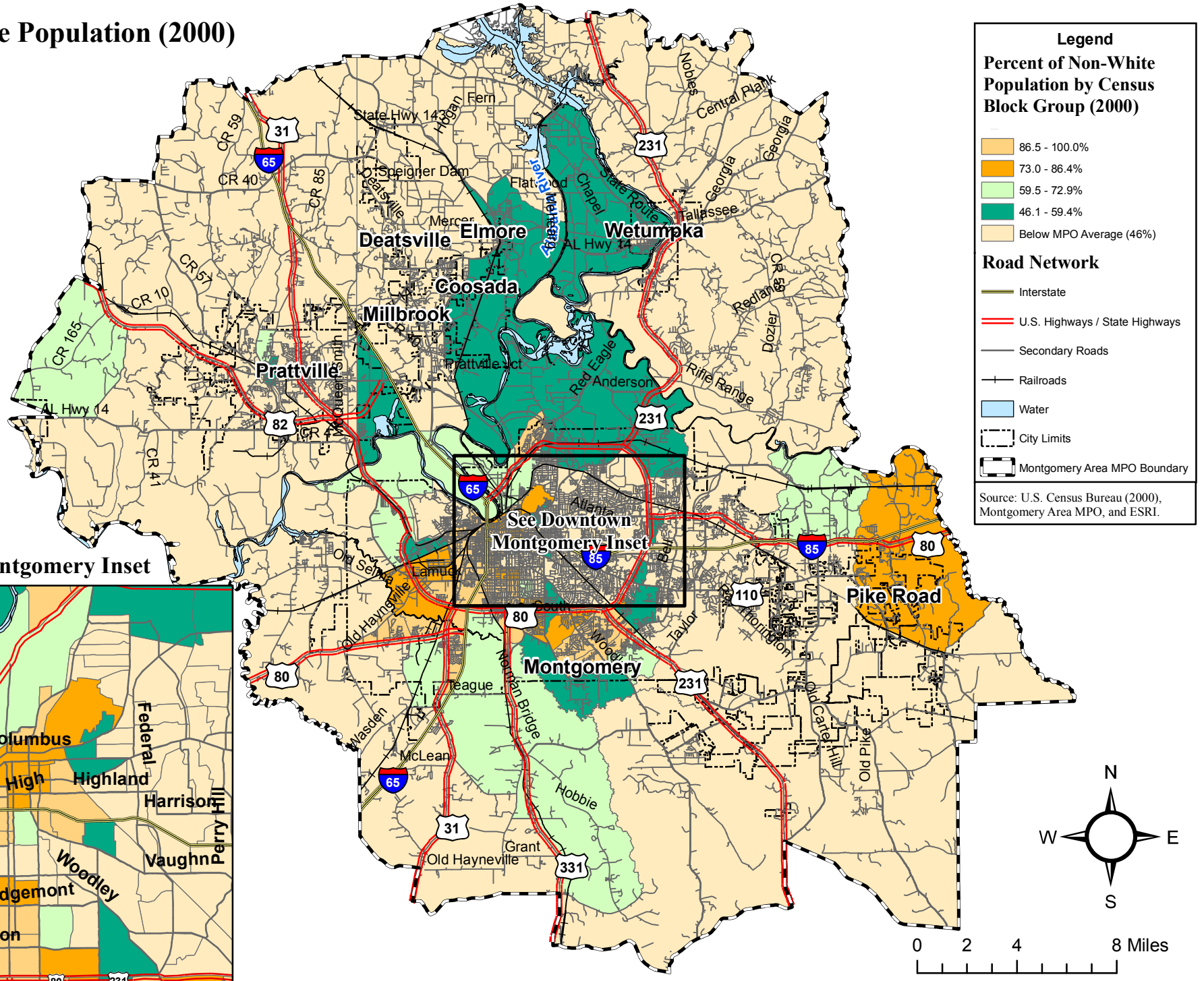
Downtown Montgomery Inset





Montgomery Study Area - 2035 Long Range Transportation Plan

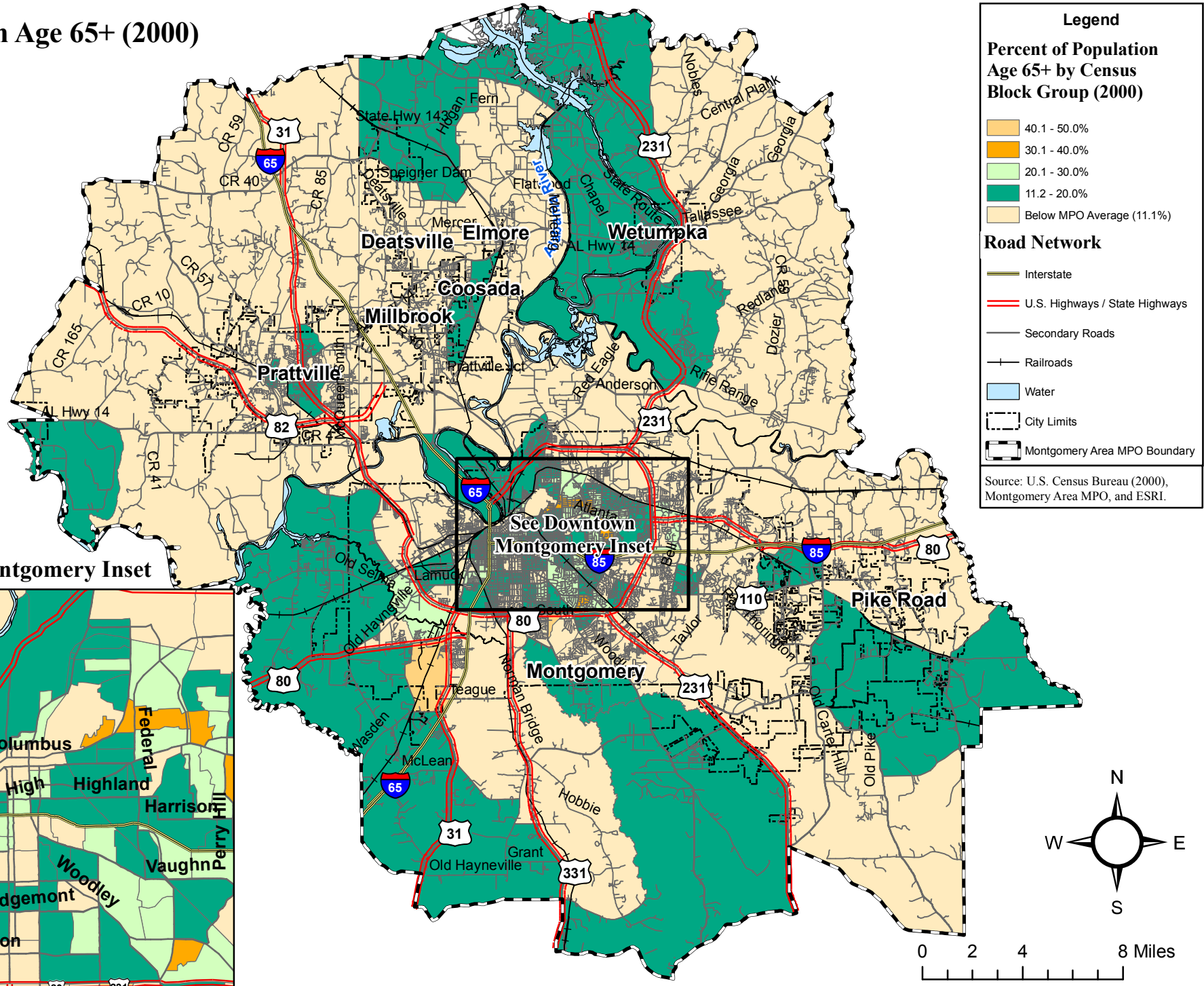
Non-White Population (2000)



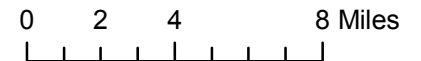
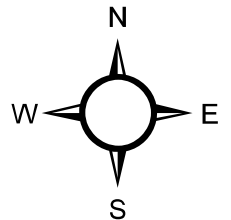
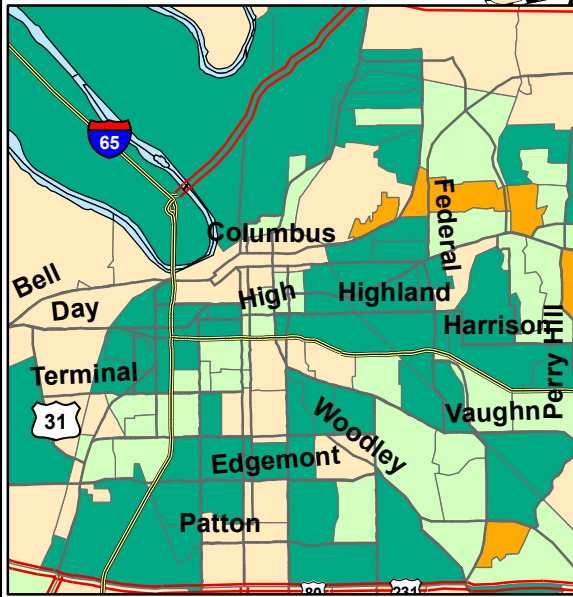


Montgomery Study Area - 2035 Long Range Transportation Plan

Population Age 65+ (2000)



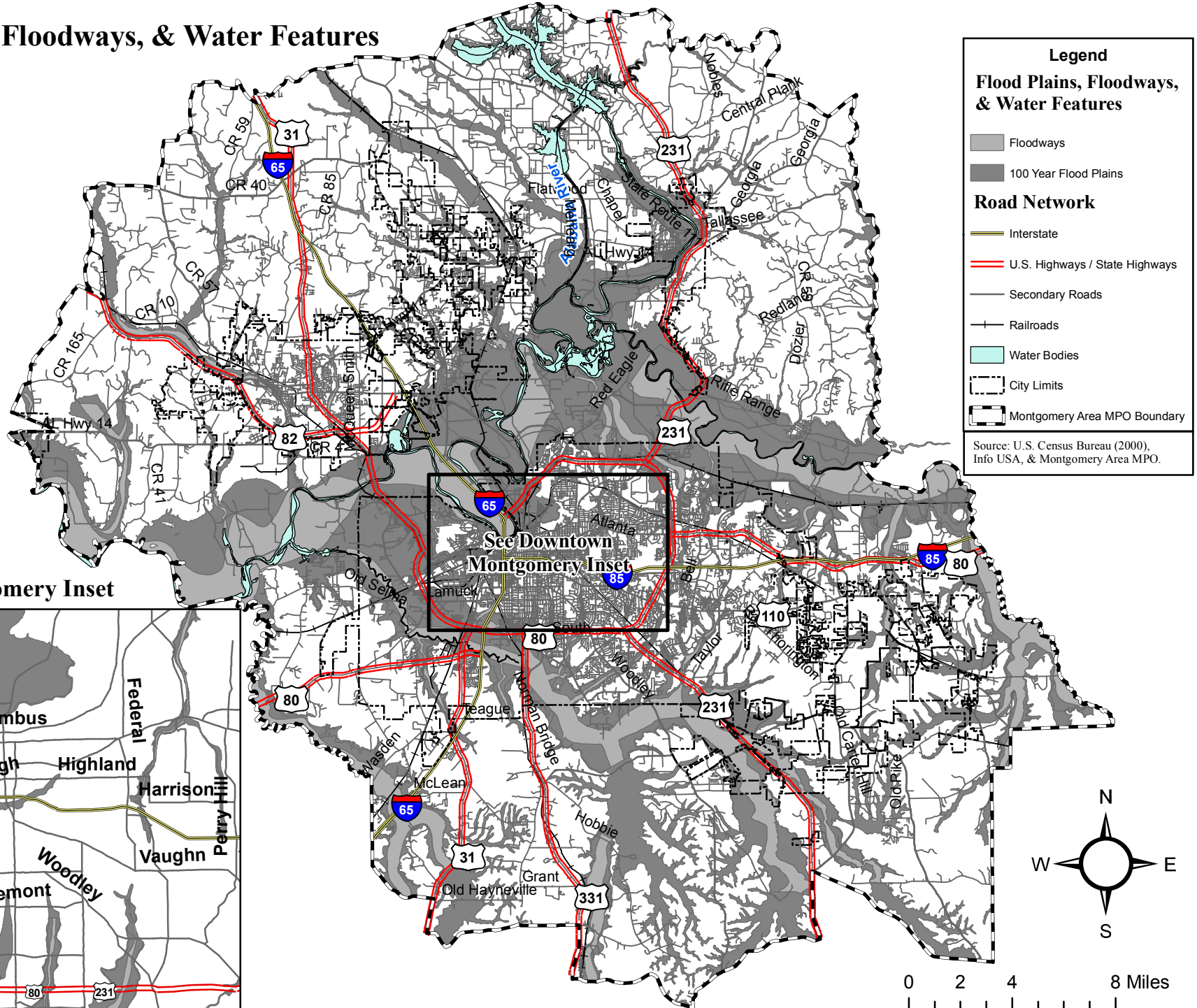
Downtown Montgomery Inset





Montgomery Study Area - 2035 Long Range Transportation Plan

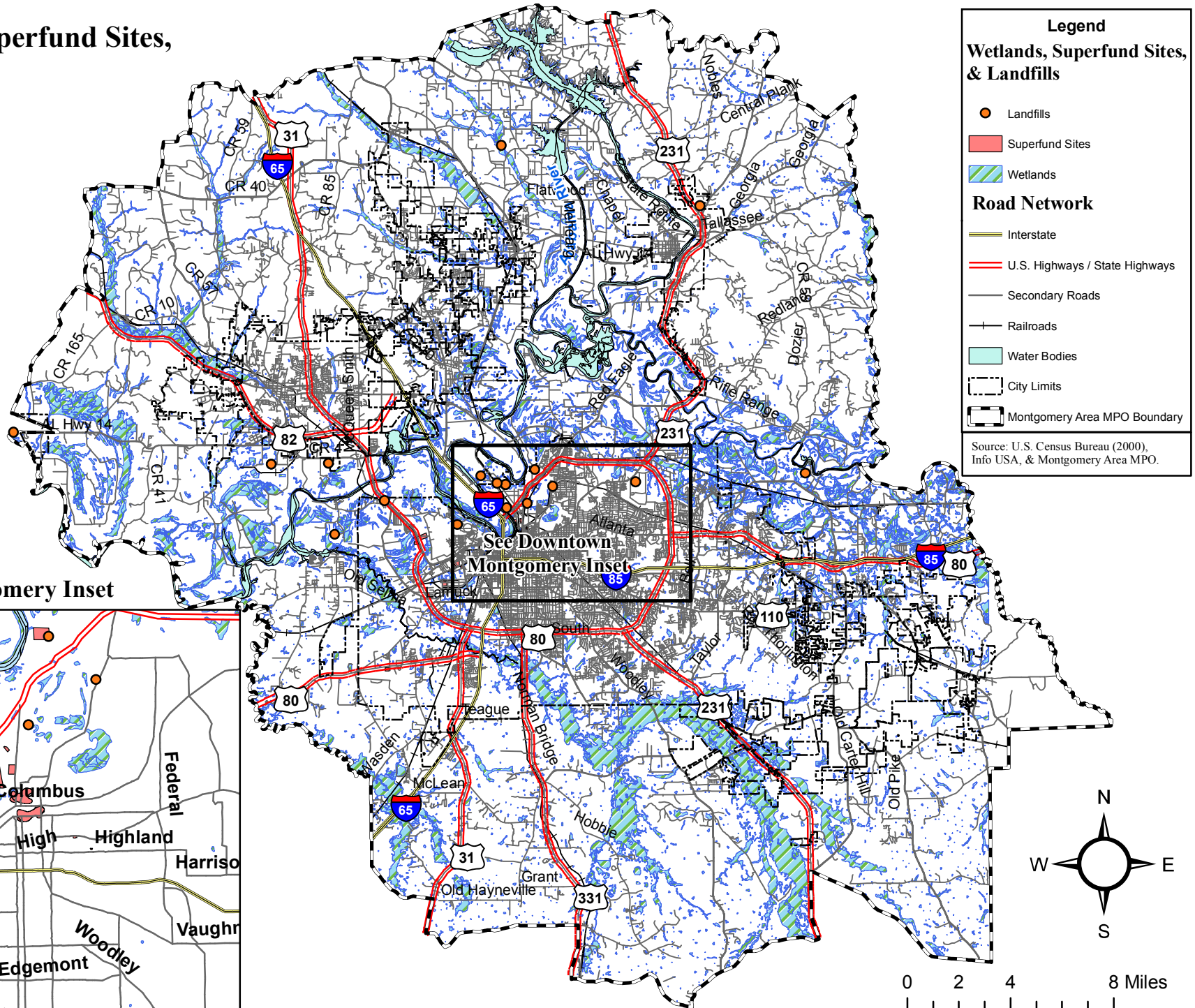
Flood Plains, Floodways, & Water Features





Montgomery Study Area - 2035 Long Range Transportation Plan

Wetlands, Superfund Sites, & Landfills

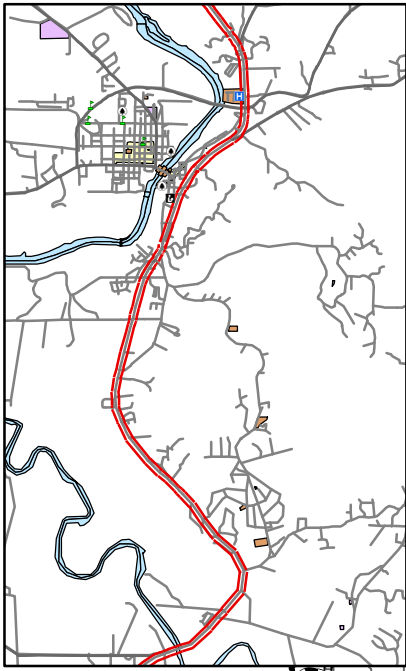




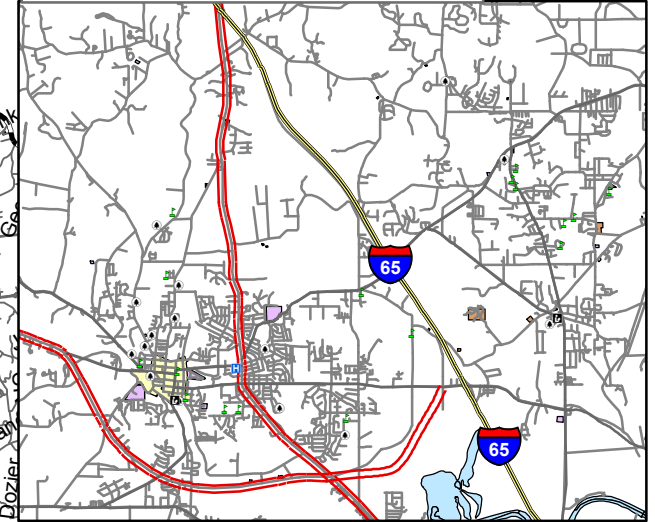
Montgomery Study Area - 2035 Long Range Transportation Plan

Historic Sites, Historic Districts, Cemeteries, Parks, Schools, Libraries & Hospitals

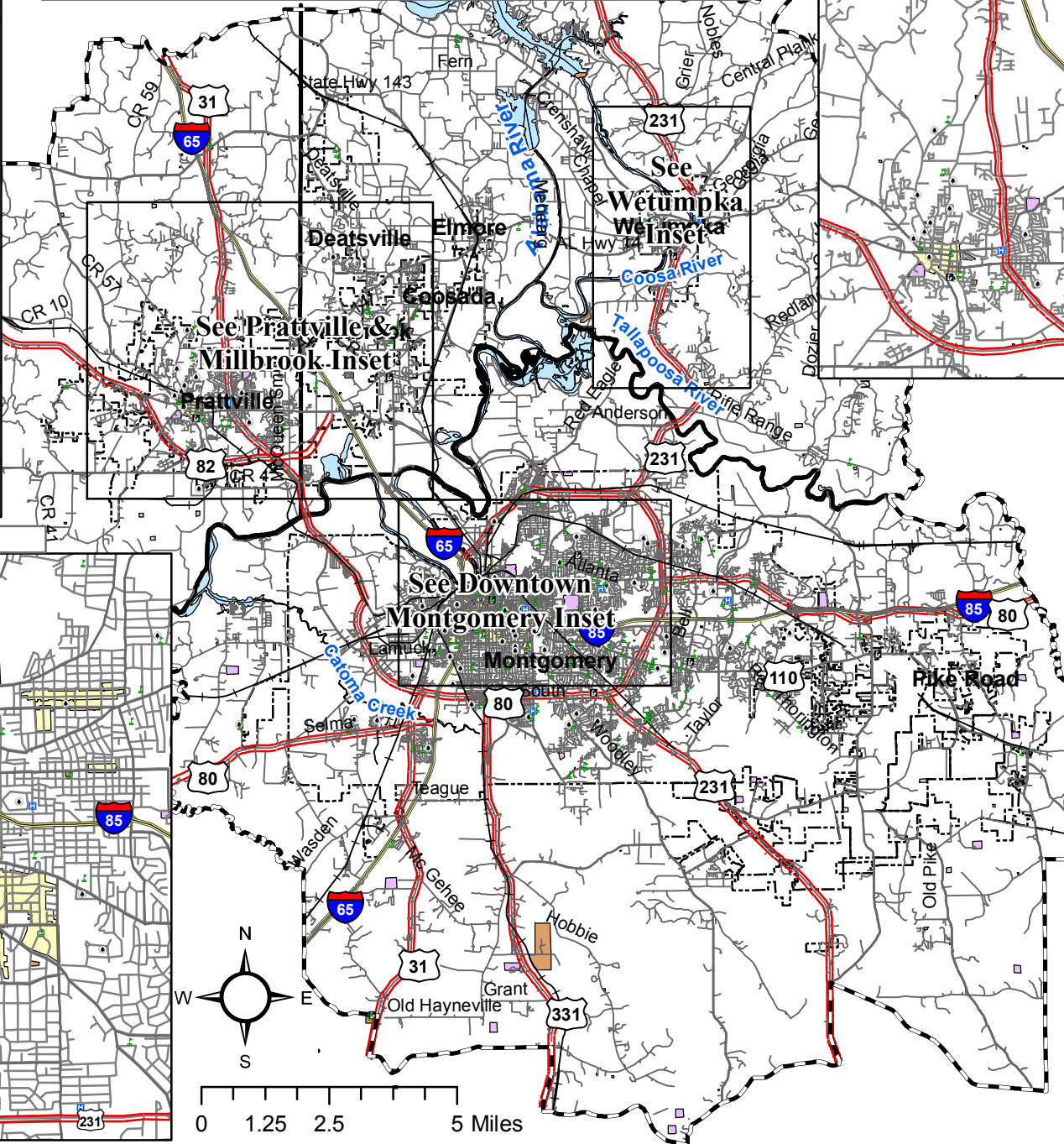
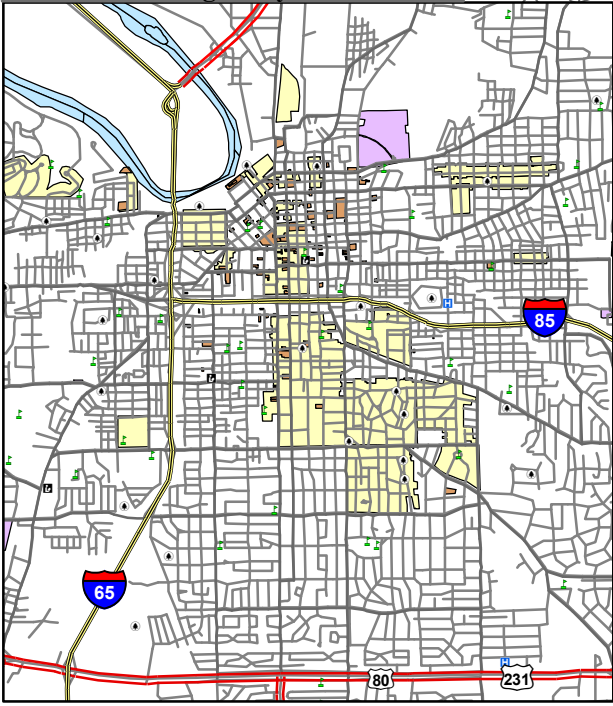
Wetumpka Inset



Prattville & Millbrook Inset



Downtown Montgomery Inset

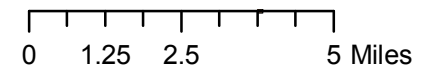
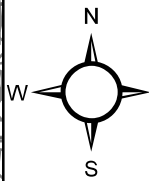


Historic Sites, Historic Districts, Cemeteries, Parks, Schools, Libraries & Hospitals

- Schools & Daycares
- Hospitals
- Libraries
- Parks
- Cemeteries
- Historic Sites
- Historic Districts

Road Network

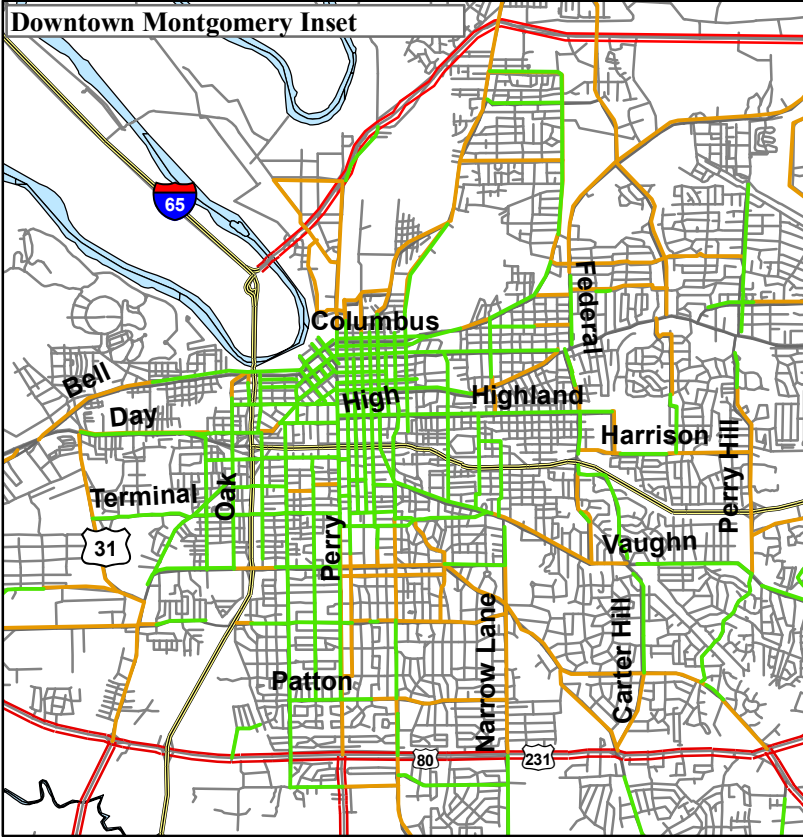
- Interstate Highways
- U.S. Highways / State Highways
- Secondary Roads
- Railroads
- Water
- City Limits
- Montgomery Area MPO Boundary



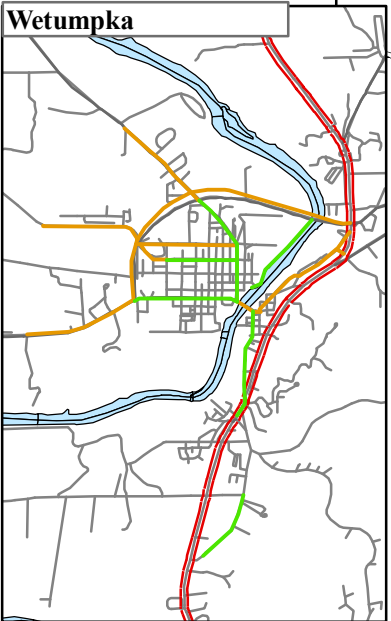
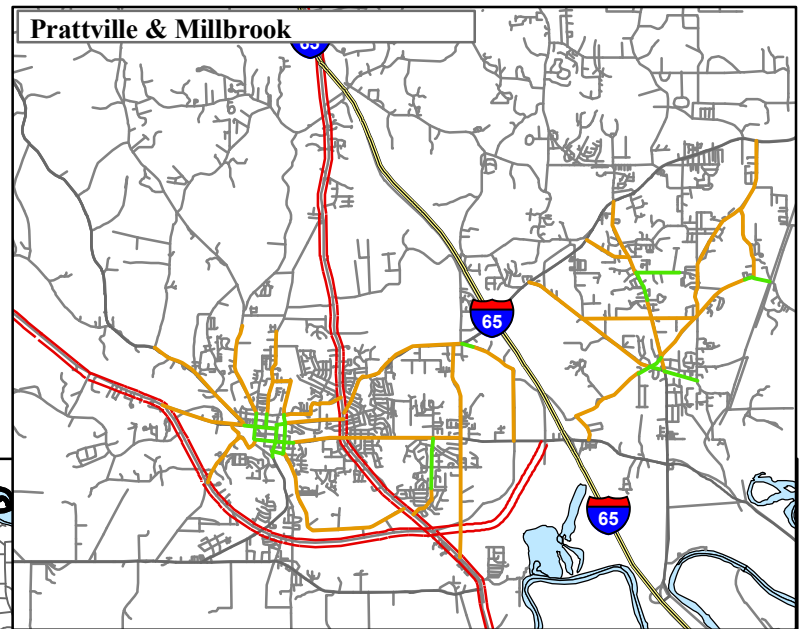
Source: U.S. Census Bureau (2000), Montgomery Area MPO, City of Montgomery, City of Prattville, National Register of Historic Places, Alabama Historical Commission, & Alabama Register of Landmarks & Heritage.



Montgomery Study Area - 2035 Long Range Transportation Plan



Existing and Needed Sidewalks



Legend

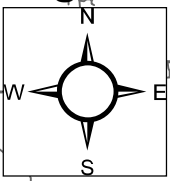
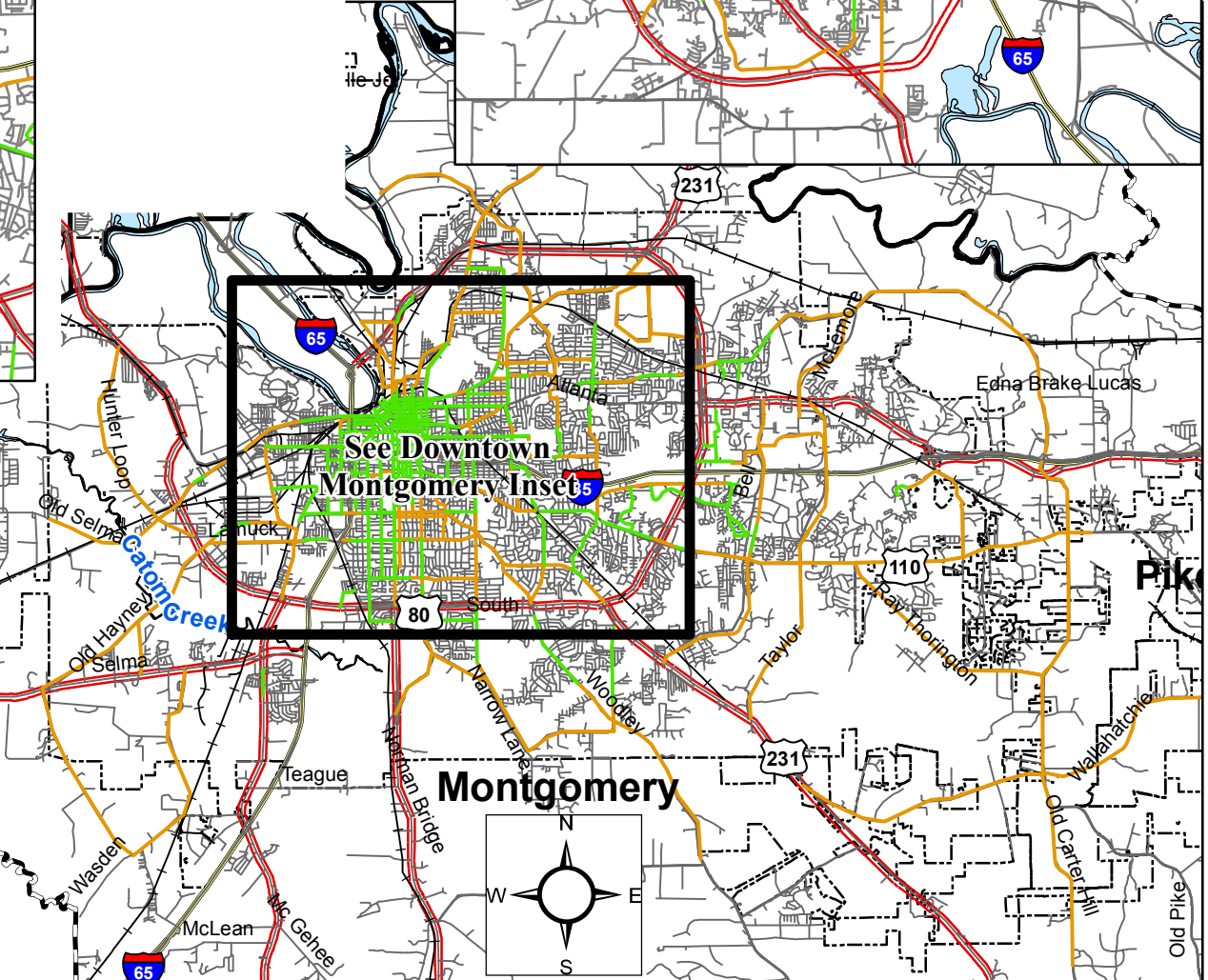
2001 - 2008 Residential Building Permits

- Existing Sidewalks (Green line)
- Needed Sidewalks (Orange line)

Road Network

- Interstate Highways (Thick blue line)
- U.S. Highways / State Highways (Red line)
- Secondary Roads (Thin grey line)
- Railroads (Black line with cross-ticks)
- Water (Blue area)
- City Limits (Dashed line)
- Montgomery Area MPO Boundary (Thick black line)

Source: U.S. Census Bureau (2000), Montgomery Area MPO & City of Montgomery.





Montgomery Study Area - 2035 Long Range Transportation Plan

2005 - 2008 Accident Locations and Frequency

