

**FINAL**

**MONTGOMERY STUDY AREA**

**T**TRANSPORTATION  
**I**MPROVEMENT  
**P**ROGRAM  
**(TIP)**

**Fiscal Years (FY)  
2008 through 2011**

**MONTGOMERY METROPOLITAN PLANNING  
AREA**

**Prepared by the MPO Transportation Planning Staff  
in cooperation with the Alabama Department of  
Transportation, Federal Transit Administration, and  
Federal Highway Administration.**

**TABLE OF CONTENTS**

**FIGURE 1. MONTGOMERY TRANSPORTATION PLANNING STUDY AREA MAP.....iv**

**METROPOLITAN PLANNING ORGANIZATION (MPO) POLICY BODY.....v**

**TECHNICAL COORDINATING COMMITTEE (TCC).....vi**

**CITIZENS ADVISORY COMMITTEE (CAC).....viii**

**FIGURE 2. 2008-2011 SURFACE TRANSPORTATION ATTRIBUTABLE PROJECTS MAP..... ix**

**FIGURE 3. 2008-2011 STATE TRANSPORTATION PROJECTS MAP..... x**

**TRANSPORTATION IMPROVEMENT PROGRAM: FISCAL YEARS 2008-2011.....xi**

**INTRODUCTION.....xi**

**EIGHT PLANNING FACTORS.....xiii**

**METHODOLOGY.....xiii**

**AMENDMENT PROCEDURES.....xv**

**LIST OF ACRONYMS USED IN THE TIP.....xvi**

**AUTHORIZED PROJECTS FISCAL YEARS 2007 to Date.....xvii**

**FINANCIAL PLAN FOR ALL PROJECTS IN 2007-2011 TIP.....xxii**

**SURFACE TRANSPORTATION ATTRIBUTABLE PROJECTS**

**SURFACE TRANSPORTATION ATTRIBUTABLE PROJECTS SUMMARY.....1**

**SURFACE TRANSPORTATION ATTRIBUTABLE PROJECTS INDIVIDUAL PROJECT PAGES.....5**

**FINANCIAL CONSTRAINT TABLE.....32**

**STATE DISCRETIONARY PROJECTS SORTED BY FUNDING CATEGORY.....35**

**BRIDGE PROJECTS SUMMARY.....36**

**TRANSPORTATION ENHANCEMENTS PROJECTS (TE) SUMMARY.....43**

**HIGH PRIORITY (HP) AND CONGRESSIONAL EARMARKS PROJECTS SUMMARY.....50**

**INTERSTATE SYSTEM PROJECTS SUMMARY.....57**

**NATIONAL HIGHWAY SYSTEM PROJECTS SUMMARY.....60**

**OTHER FEDERAL AND STATE AID PROJECTS SUMMARY.....75**

**OTHER SURFACE TRANSPORTATION PROJECTS SUMMARY.....77**

**STATE SAFETY PROJECTS SUMMARY.....82**

**STATE FUNDED PROJECTS SUMMARY.....94**

**SYSTEM MAINTENANCE PROJECTS SUMMARY.....104**

**TRANSIT PROJECTS SUMMARY.....108**

**CERTIFICATION/RESOLUTION.....130**

**METROPOLITAN PLANNING SELF-CERTIFICATION.....131**

**MPO RESOLUTION TO ADOPT THE DRAFT FISCAL YEARS 2008-2011 TIP.....132**



## Montgomery Metropolitan Planning Organization Policy Committee Membership

### Voting MPO Members

Mayor Bobby Bright, **MPO Chairman**  
City of Montgomery

Mayor Frank R. Houston  
Town of Coosada

Mayor Jim Byard, **MPO Vice Chairman**  
City of Prattville

Mr. Charles Jinright  
City Councilman  
City of Montgomery

Mayor Al Kelley  
City of Millbrook

Mayor Jo Glenn  
City of Wetumpka

Ms. Janet May  
City Councilwoman  
City of Montgomery

Mr. Ken Groves, Director  
Planning & Development  
City of Montgomery

Mr. Todd Strange  
Montgomery County Commission

Mr. Randall Estes  
Sixth Division Engineer – ALDOT

Mr. Clyde Chambliss, Jr.  
Autauga County Commission

Mr. Joe Faulk  
Elmore County Commission

### Non-Voting MPO Members

Mr. Kelvin L Miller  
General Manager  
Montgomery Area Transit System

Mr. Bill Tucker, Executive Director  
Central AL Regional Planning &  
Development Commission

Mr. Robert J. Jilla  
Bureau Chief  
Transportation Planning/Modal  
Programs ALDOT

Ms. Mary Evelyn Tucker  
Autauga County Rural Transportation

Mr. Mark Bartlett  
Division Administrator  
Federal Highway Administration

Mr. Ken Upchurch  
City of Montgomery Planning Commission

Mr. Jeffery Anoka  
Transportation Program Specialist  
Federal Transit Administration

# Montgomery Area Metropolitan Planning Organization (MPO) Technical Coordinating Committee (TCC) Membership

## TCC-Voting Members

Ms. Alfredo Acoff, Coordinator  
Environmental Technical Section ALDOT

Ms. Terri Adams  
ADECA

Mr. Locke (Bubba) Bowden  
Traffic Engineer  
City of Montgomery

Mr. Chris Conway  
City Engineer  
City of Montgomery

Mr. David Bufkin  
County Engineer  
Autauga County

Ms. Gwen Carter  
Elmore Town Clerk  
Town of Elmore

Mr. Lee Connor (Chris Christensen)  
Montgomery Association for Retarded Citizens

Mr. Joel Duke, City Planner  
City of Prattville

Mr. Robert E. Smith Jr. (Assistant TCC Chairman)  
Senior Transportation Planner  
City of Montgomery/MPO Staff

Mayor W. Clayton Edgar  
Town of Deatsville

Mr. David Harris  
Planning Programs & Right of Way Manager  
Federal Highway Administration

Mr. Jerry Peters  
City Engineer  
City of Millbrook

Mr. Chris Howard  
ADEM  
Air Division Planning Branch

Clint Andrews  
Planning Engineer  
Federal Highway Administration

Mr. Ken Groves, Director (TCC Chairman)  
City Planning & Development  
City of Montgomery, TCC Chairman

Ms. Connie Hand  
Town of Coosada

Mr. Stuart Manson  
Asst. Traffic Engineer  
City of Montgomery

Mr. Richie Beyer  
County Engineer  
Elmore County

Emmanuel Oranika, Ph.D.  
Assistant Bureau Chief  
Transportation Planning/Modal Programs  
ALDOT

Mayor Gordon Stone  
Town of Pike Road

**TCC cont'd**

Mr. Kelvin L. Miller  
General Manager  
Montgomery Area Transit System

Mr. Bill Tucker, Executive Director  
Central AL Regional Planning &  
Development Commission

Ms. Laura Crowe  
Autauga County Rural  
Transportation

Ms. Janice Whorton, City Clerk  
City of Wetumpka

Mr. Tommy Tyson  
Land Use Controls Administrator  
City of Montgomery

Mr. Frank Filgo, President  
Alabama Trucking Association

Mr. James M. Kelley  
Assistant County Engineer  
Montgomery County

Mr. David Bollie  
County Transportation Engineer  
ALDOT Sixth Division

**Non-Voting TCC Members**

Mr. Wes Elrod  
Assistant Bureau Chief  
Transportation Planning/Modal Programs  
-ALDOT

Mr. William E. (Bill) Couch  
Assistant Bureau Chief  
Transportation Planning/Modal  
Programs-ALDOT

Mr. Phil Perry  
Executive Director  
Montgomery Airport Authority

**MPO Transportation Planning Staff**

Mr. Robert E. Smith Jr./Assistant TCC Chairman)  
Senior Transportation Planner/Division Head  
City of Montgomery/MPO

Mr. Kendall Anderson  
Transportation Planner  
City of Montgomery/MPO

Mr. James Askew  
GIS Analyst  
City of Montgomery/MPO

Ms. April Delchamps  
Transportation Planner  
City of Montgomery/MPO

Ms. Diana Drummond  
Transportation Planning Technician  
City of Montgomery/MPO

## Montgomery Area Metropolitan Planning Organization (MPO) Citizens Advisory Committee (CAC) Membership

Mr. David Sikes, **CAC Chairman**  
Elmore County

Mr. Robert Britton  
City of Montgomery

Mr. James Brown  
City of Montgomery

Rodger Burnette  
Montgomery County

Ms. Valeria Harman  
City of Montgomery

Mr. Johnny Jackson  
City of Montgomery

Ms. Patricia Jackson  
Elmore County

Mr. David Martin  
City of Montgomery

Ms. Ruth Ott  
City of Montgomery

Mr. Blair Rehnberg  
Town of Coosada

Mr. Jon Broadway  
City of Montgomery

Mr. Edward Stevens  
City of Montgomery

Ms. Gracie Stroud  
City of Montgomery

Ms. Kathy LeCroix  
City of Millbrook

Mr. Theodore White  
City of Montgomery

Mr. Augustus Townes, Jr.  
City of Montgomery

**Figure 2.**

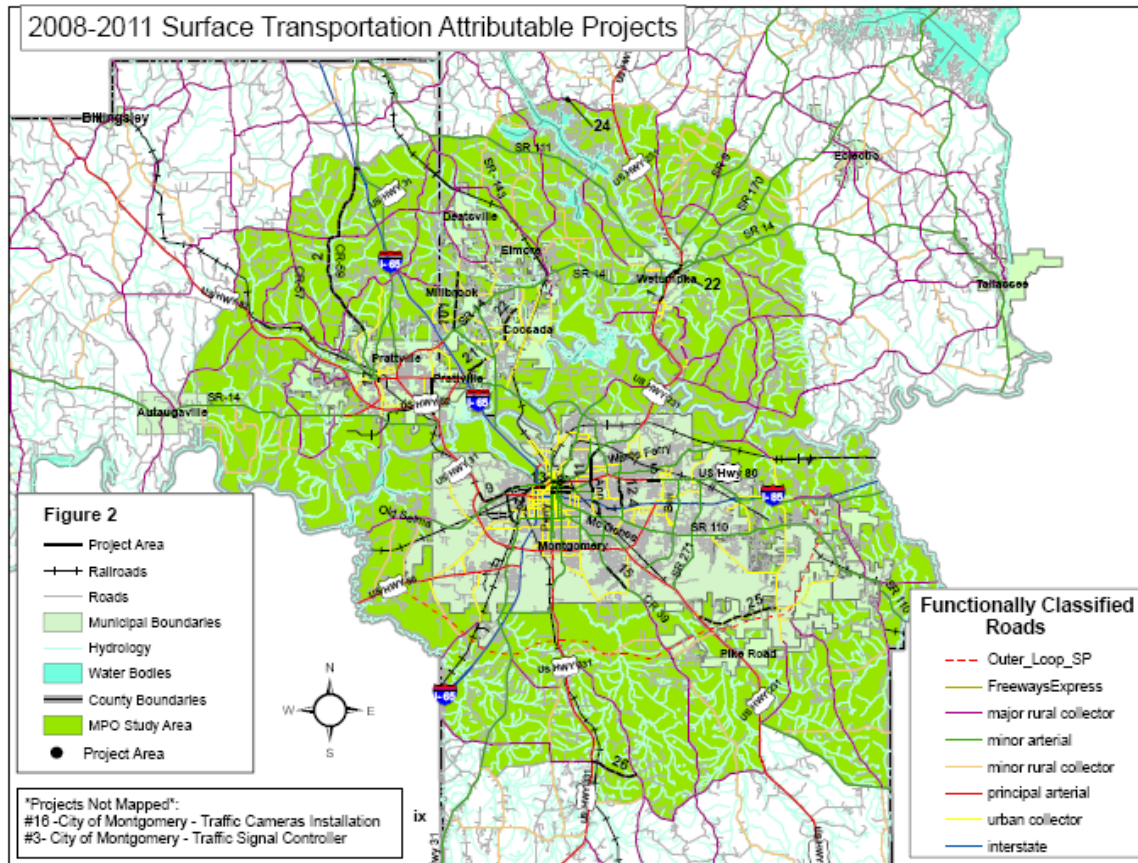
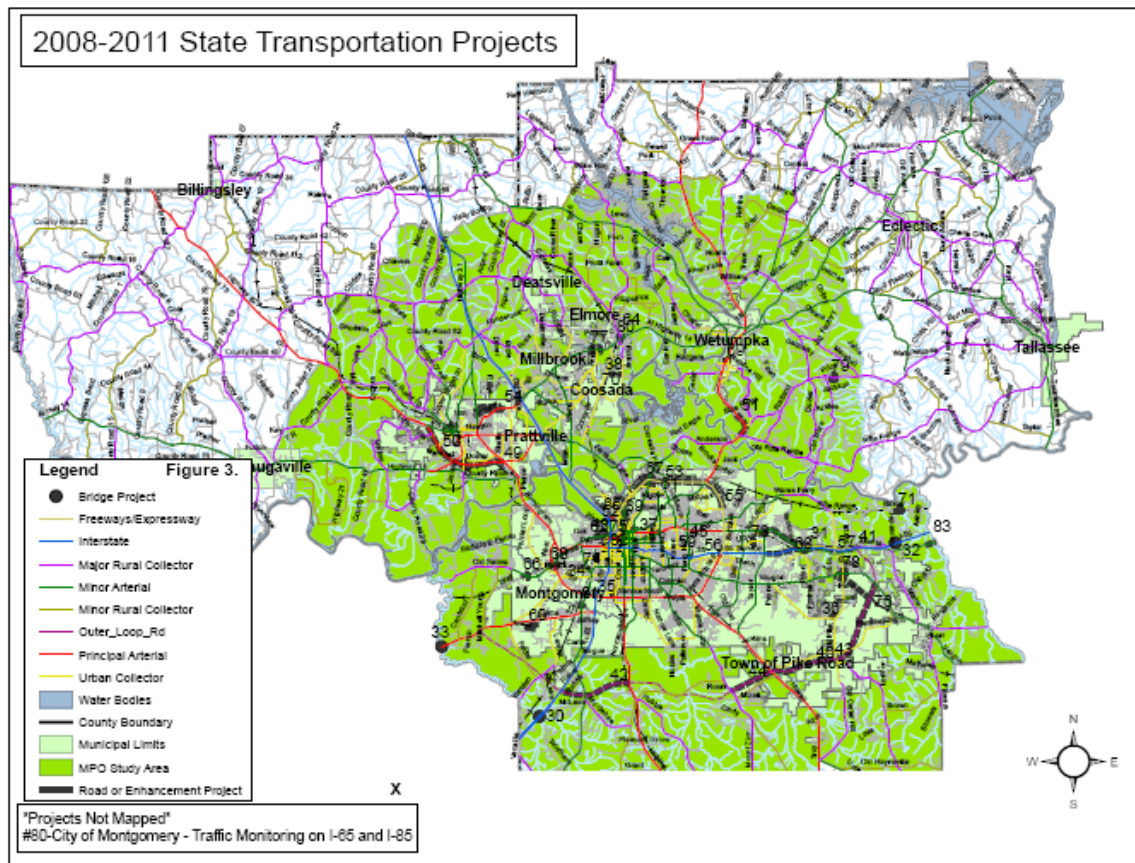


Figure 3.



# TRANSPORTATION IMPROVEMENT PROGRAM FISCAL YEARS 2008-2011

## **Introduction**

The Transportation Improvement Program (TIP) is a list of transportation projects developed by the Montgomery Area Metropolitan Planning Organization (MPO). The 12-member MPO has elected representatives from the Town of Coosada, the City of Millbrook, the City of Montgomery, the City of Prattville, and the City of Wetumpka, as well as County Commission representatives for Autauga, Elmore, and Montgomery Counties. The Alabama Department of Transportation Sixth Division Engineer and the City of Montgomery Director of Planning and Development also serve on the MPO as voting members by position. The MPO non-voting members also contribute to the planning process. The projects in the TIP are taken from the *Montgomery Study Area 2030 Long Range Transportation Plan (LRTP)* with the exception of safety, resurfacing, and few other special types of projects. The *2030 LRTP* serves as a guide to work towards for achieving needed projects by the forecast year. In most cases, the *2030 Long Range Transportation Plan* projects must be done in phases.

The Intermodal Surface Transportation Efficiency Act of 1991 (ISTEA), Transportation Equity Act for the 21<sup>st</sup> Century (TEA-21) and the latest legislation Safe, Accountable, Flexible, Efficient Transportation Equity Act: A Legacy (SAFETEA-LU) for Users requires TIPs to be fiscally constrained. This means that the MPO cannot program more projects than it can fund.

In the past, the Montgomery MPO received dedicated STP monies which were allocated on the basis of the Montgomery Urbanized Area having a population greater than 200,000. However, due to a Census Bureau change in the definition of what and where the urbanized area is, the Montgomery Area stopped receiving dedicated monies at the end of FY-02. The ALDOT does provide Surface Transportation Program Other Area (STPOA) funds in lieu of dedicated funds based on the 2000 Census urbanized area population of 196,892 (resulting from the new definition of what an urbanized area is). The end result was that the change of definition reduced area-wide funding by about 10%. The MPO selects transportation projects that are funded using STPOA funds.

The City of Montgomery also receives Federal Transit Administration (FTA) formula and capital funds (Sections 5307 and 5309 respectively). Also, Autauga County also receives FTA Section 5311 funds for rural transportation in the area. The highway or transit project sponsor is responsible for providing the local match if local match is required.

The other projects shown in this TIP are State Discretionary Projects. They are as follows: Intelligent Transportation System (ITS), Bridge (BR), Interstate Maintenance (IM), National Highway System (NHS), State Surface Transportation Program (STP), Hazard Elimination and Safety (HES), STP Transportation Enhancement (TE), Other (OTH, and STP-Railroad (RR). The State also allocates FTA Section 5310 (vehicles for non-profits) and FTA Section 5311 (for rural public transportation). The Outer Loop Road in Montgomery is funded by Congressional allocation and is shown as a High Priority Program Project (HP).

### **LEVEL OF EFFORT**

Projects in the draft FY 2008-2011 TIP, which are referred to as LEVEL OF EFFORT (LVOE), represent certain unidentified projects which will be authorized during a given fiscal year. These projects are placed in the TIP according to selected funding programs with their anticipated apportionments for each fiscal year within the TIP. The selected funding programs include:

- Transportation Enhancement Projects
- Safety Projects such as hazard elimination roadway and rail, high speed rail, seat belt, blood alcohol content, etc.
- Transportation and Community and System Preservation
- Recreational Trails
- Federal Aid Resurfacing Program
- GARVEE Bond Projects
- County Allocated Funds such as, off system bridge, optional bridge, and STP non urban
- Federal Transit Sections 5311 (non-urban), and 5310 (Elderly and Disabilities)

Any of these LVOE type projects are pre-approved by the MPO and will not require any further MPO action prior to authorization, but will be provided to the MPO for informational purposes only. The MPO will be notified as soon as the specific projects within the study area are selected and will have five days to decline the project.

## **Planning Factors**

In developing the TIP, the MPO is required to consider and has considered the current surface transportation authorizing legislation (SAFETEA-LU) factors. Eight (8) planning were considered during the transportation planning process for the draft TIP document, they are as follows:

1. Support the economic vitality of the metropolitan area, especially by enabling global competitiveness, productivity, and efficiency;
2. Increase the safety of the transportation system for motorized and non-motorized users;
3. Increase the security of the transportation system for motorized and non-motorized users;

Section 25 Increase accessibility and mobility of people and for freight;

5. Protect and enhance the environment, promote energy conservation, improve the quality of life, promote consistency between transportation improvements and State and local planning growth and economic development patterns;
6. Enhance the integration and connectivity of the transportation system, across and between modes, for people and freight;
7. Promote efficient system management and operation; and
8. Emphasize the preservation of the existing system.

## **Methodology**

The MPO Transportation Planning Staff started TIP development in April 2007 and notified the MPO, TCC and CAC for input into the development of the draft 2008-2011 TIP. The MPO Staff used estimated funding levels from the ALDOT's urban area funding availability report and TIP financial constraint table for the Surface Transportation Attributable program for the draft FY 2008-2011 TIP.

Also, all projects that were in the current FY 2006-2008 TIP that were not authorized were included in the draft FY 2008-2011 TIP. Also, projects that were in the ALDOT's Comprehensive Project Management System (CPMS) and new Transportation Economic and Land Use System (TELUS) were consulted for projects that were planned and have Federal and State project numbers for FY 2008-2011.

In March 2007 the ALDOT provided the MPO Transportation Planning Staff with an Urban Area Funding Availability Report (Federal Funding Only) project list that showed planned and programmed projects against balanced and expected revenues. The list was generated from ALDOT's CPMS. Also, the MPO Transportation Planning Staff gathered input and project proposals from TCC stakeholders from around the study area for further input into the development of the TIP. A total of four (4) TCC working session meetings were held to make adjustments and select projects for inclusion into the draft TIP document.

The MPO Staff was also provided with estimated Federal Transit Administration (FTA) grant amounts for FTA Section 5307 for capital and operating funds from Montgomery Area Transit System (MATS) for FY 2008-2011 of the TIP. Also, the MPO Staff consulted the TELUS to get estimated amounts for capital, operating and administration funds for the Autauga County Rural Transportation System and various other transit projects.

In July and August of 2007 the MPO Staff continued work to prepare and finalize the draft FY 2008-2011 TIP using ALDOT's TELUS and various other reports. The TELUS is an internet based program that interfaces with the ALDOT CPMS and automatically updates when ALDOT's CPMS is modified.

A newspaper advertisement for public involvement was placed in all general circulation newspapers in the MPO Study Area to notify the general public about the draft FY 2008-2011 TIP. The draft TIP was also placed at various document review sites around the MPO Transportation Study Area for public comment during the public involvement period which will run from September 4, 2007 –

September 17, 2007. One public involvement meeting was held on September 11, 2007 at City of Montgomery-City Hall-City Council Chambers (a centralized location), from 5:00 p.m. – 7:00 p.m. to gather citizen input into the draft document.

### **Amendment Procedures**

The FY 2008-2011 TIP document can and will be amended periodically, to adjust funding, time-frames or to handle other factors relevant to projects. New projects may be added if appropriate and if funding is available. Also, an annual rebalancing of the FY 2008-2011 TIP will be performed in FY 2009 and 2010 to demonstrate that continued financial constraint requirements are being met by the MPO.

## ACRONYMS USED IN THE TRANSPORTATION PLANNING PROCESS

AL	Alabama Highway
ALDOT	Alabama Department of Transportation
BR	Bridge
BSP	Base and Pave
CAC	Citizens Advisory Committee
CAP	Transit Capital
CARPDC	Central Alabama Regional Planning & Development Commission
CN	Construction
CR	County Road
EJ	Environmental Justice
FCS	Functional Classification System
FHWA	Federal Highway Administration
FTA	Federal Transit Administration
GDB	Grade, drain, and bridge
GPB	Grade, drain, base, pave, and bridge
GIS	Geographic Information System
HES	Hazard Elimination and Safety (Discretionary competitive STP funds)
IM	Interstate maintenance
ISTEA	Intermodal Surface Transportation Efficiency Act of 1991
ITS	Intelligent Transportation System
LRTP	Long Range Transportation Plan (20 Year Plan)
MATS	Montgomery Area Transit System
MP	Mile post
MPA	Metropolitan Planning Area (identified by the Census Bureau)
MPO	Metropolitan Planning Organization
MT	Maintenance program
MUTCD	Manual on Uniform Traffic Control Devices
NHS	National Highway System
OTH	Other
P&D	City of Montgomery Planning & Development
PE	Preliminary Engineering
RW or ROW	Right of Way
SA	Study Area
Section 5303	FTA Metropolitan Planning Funds
Section 5307	FTA formula funds for urbanized areas
Section 5309	FTA capital program funds (currently earmarked by Congress)
Section 5310	FTA Elderly and Persons with Disabilities Program Funds
Section 5311	FTA Formula Funds for Rural Transportation Programs
Sixth Division	ALDOT Division consisting of eight counties (Autauga, Bullock, Butler, Dallas, Elmore, Lowndes, Macon, and Montgomery)
SR	State Road
STIP	State Transportation Improvement Program
STPOA	Surface Transportation Program Other Area
STP	Surface Transportation Program
TCC	Technical Coordinating Committee
TE	Transportation Enhancement
TEA-21	Transportation Equity Act for the 21 <sup>st</sup> Century
TIP	Transportation Improvement Program
UA	Urbanized Area (identified by the Census Bureau)
UC	Urban Cluster (identified by the Census Bureau)
UPWP	Unified Planning Work Program
UT	Utility Work

## Authorized Transportation Projects Narrative Summary for FY 2007 as of August 2007

Fiscal Year 2007 runs from October 1, 2006 to September 30, 2007. During that time, a total of 25 Federally Funded projects were authorized/obligated by the Alabama Department of Transportation with five being transit related. There were eight projects in Autauga County, five projects in Elmore County, and twelve projects in Montgomery County. Table 1 lists the FY 2007 authorized projects.

### Total Cost Analysis

The FY2007 Authorized projects included projects in all three Counties and in some municipalities. To better understand the distribution of projects, the total cost of projects for each county was analyzed.

Montgomery County had a total of twelve projects including three interstate maintenance projects, two national highway maintenance program projects, one STPOA project, one STP any area project, one STP non-urban area project, one special projects category project, one transportation enhancement program project, one equity bonus program project, one highway safety improvement program project, one capital elderly/handicapped program project, and one state program-special aid program project. Some projects were funded by multiple categories. A total of \$77,485,000 was authorized in Montgomery County in FY 2007.

Elmore County had a total of five projects including three STPOA projects and two state category-PE program projects. A total of \$1,301,000 was authorized in Elmore County in FY 2007.

Autauga County had a total of eight projects including one national highway system program project, one transportation enhancement project, one bridge project, three FTA Section 5311 program projects, one job access reverse commute program project, and three Federal Aeronautics program projects, A total of \$2,246,000 was authorized in Autauga County in FY 2007. The following table summarizes the total cost per county:

COUNTY	TOTAL
Autauga County	\$ 2,246,000
Elmore County	\$ 1,301,000
Montgomery County	\$77,485,000
Total	\$81,032,000

Additionally, based on new SAFETEA-LU requirements three (3) of the authorized/obligated projects are investments in both pedestrian and bicycle transportation facilities, as either part of an overall project or a stand alone project. In “**Table 1 Fiscal Year 2007 Authorized Transportation Projects as of September 12, 2007**”, project number two (2) in Autauga County, project number nine (9) in Elmore County and project number twenty (20) in Montgomery County are identified as bicycle and pedestrian investment projects. See project numbers referenced above in Table 1, which starts on Roman numeral page number xviii.

**Table 1.****Fiscal Year 2007 Authorized Transportation Projects as of September 12, 2007**

<b>Proj. No.</b>	<b>Description</b>	<b>Scope</b>	<b>Cost</b>	<b>County</b>
1.	Resurface SR-6 (US-82) From SR-14 to SR-3 (US-31)	FM	\$648,000	Autauga
2.	Autauga Creek Walkway. This project is located on the North bank of Autauga Creek between Chestnut St and Bridge St Downtown in the City of Prattville	CN	\$383,000	Autauga
3.	Replace bridge SR-206 over Autauga Creek	PE	\$300,000	Autauga
4.	FTA Section 5311, Autauga County Rural Transportation Operating Assistance for Fiscal Year 2007	TR	\$252,000	Autauga
5.	FTA Section 5311, Autauga County Rural Transportation Capital Support Equipment for Fiscal Year 2007	TR	\$1,000	Autauga
6.	FTA Section 5311, Autauga County Rural Transportation Administrative Assistance for Fiscal Year 2006	TR	\$49,000	Autauga
7.	FTA Job Access Reverse Commute (JARC), Autauga County Rural Transportation, Fiscal Year 2007	TR	\$23,000	Autauga
8.	Bridge Replacement on CR-29 @ Weoka Creek, Water Line Relocation	UT	\$255,000	Elmore
9.	Widen to Accommodate Bike Lane, Level, Resurface and Traffic Stripe for Fort Toulouse Road from inside Fort Toulouse to Wetumpka City Limits	CN	\$481,000	Elmore

10.	Resurface, Widen and Level CR-153 (Coosada Pkwy) from CR-23 (Coosada Rd) to SR-14	CN	\$490,000	Elmore
11.	Intersection Improvement SR-14 @ SR-143, Restripe and Signal Work for 5-Lane	PE	\$25,000	Elmore
12.	Retrofit and Repair of Bridge Joints on I-65 Between Montgomery County Line to South of SR-6 (US-82 @Exit 179)	PE	\$50,000	Elmore
13.	I-65 from North of Catoma Creek to North of Fairview Avenue, Emergency Concrete Rehab of Select Slabs	CN	\$268,000	Montgomery
14.	Pave Rehab on I-85 from I-65 to Near Hall Street (Priority No. 2)	CN	\$7,762,000	Montgomery
15.	I-65 Rubbelization and Overlay from Catoma Creek Bridges to North of Fairview Avenue and Inside Lane Additions from the Catoma Creek Bridge to to the Mill Street Bridges (Work includes G, D, B, PV Rubbilization, Bridge Widening and Raising (Priority No. 1)	CN	\$54,110,000	Montgomery
16.	I-65 Bridge Widening from North of Fairview Avenue to the Alabama River Bridge. Includes Bridges over Mill Street, I-85 Ramps, and Day Street.	CN	\$6,535,000	Montgomery
17.	Widen and Resurface Zelda Road From Ann Street to Carter Hill Road	UT	\$111,000	Montgomery
18.	Resurface SR-3 (US-31) from Lowndes County Line to South of I-65 Interchange	FM	\$4,265,000	Montgomery
19.	Resurface CR-27 (Old McGehee Road) from SR-3 (US-31) to CR-23 (Site 1) & CR-107 (Marler Road) from SR-110 to SR-8 (US-80) (Site 2)	CN	\$1,227,000	Montgomery
20.	Landscape Improvements @ Governor's Mansion (Phase 2)	CN	\$71,000	Montgomery

21.	I-85 Extend Southbound outside Acceleration Lane from West of the Eastern Blvd to Perry Hill Road	CN	\$2,901,000	Montgomery
22.	Bridge Widening and Culvert Replacement over Cloverland Ditch on Rosa Parks Avenue, CSX Railroad and South Court Street	PE	\$100,000	Montgomery
23.	Section 5310 Montgomery Area Council on Aging, Capital Vehicle	TR	\$35,000	Montgomery
24.	Construction of Turn Lanes on SR-8 (US-80) at Mitylene CR-105 (Taylor Road)	CN	\$100,000	Montgomery
25.	Construct Access Road, City of Prattville-Grade, Drain, Base, and Pave	CN	\$590,000	Autauga
			<b>Total = \$</b>	<b>81,032,000</b>

**Total Project Cost of Authorized Projects in Montgomery Study Area FY 2007 to date = \$81,032,000**

**Explanation of Acronyms in Scope Column:**

- PE – Preliminary Engineering
- UT – Utility Relocation
- TR – Transit
- RW – Right of Way
- MC – Maintenance Category
- SM – State Maintenance
- CN – Construction
- FM – Federal Maintenance
- LB- Land and Building

## FINANCIAL PLAN





